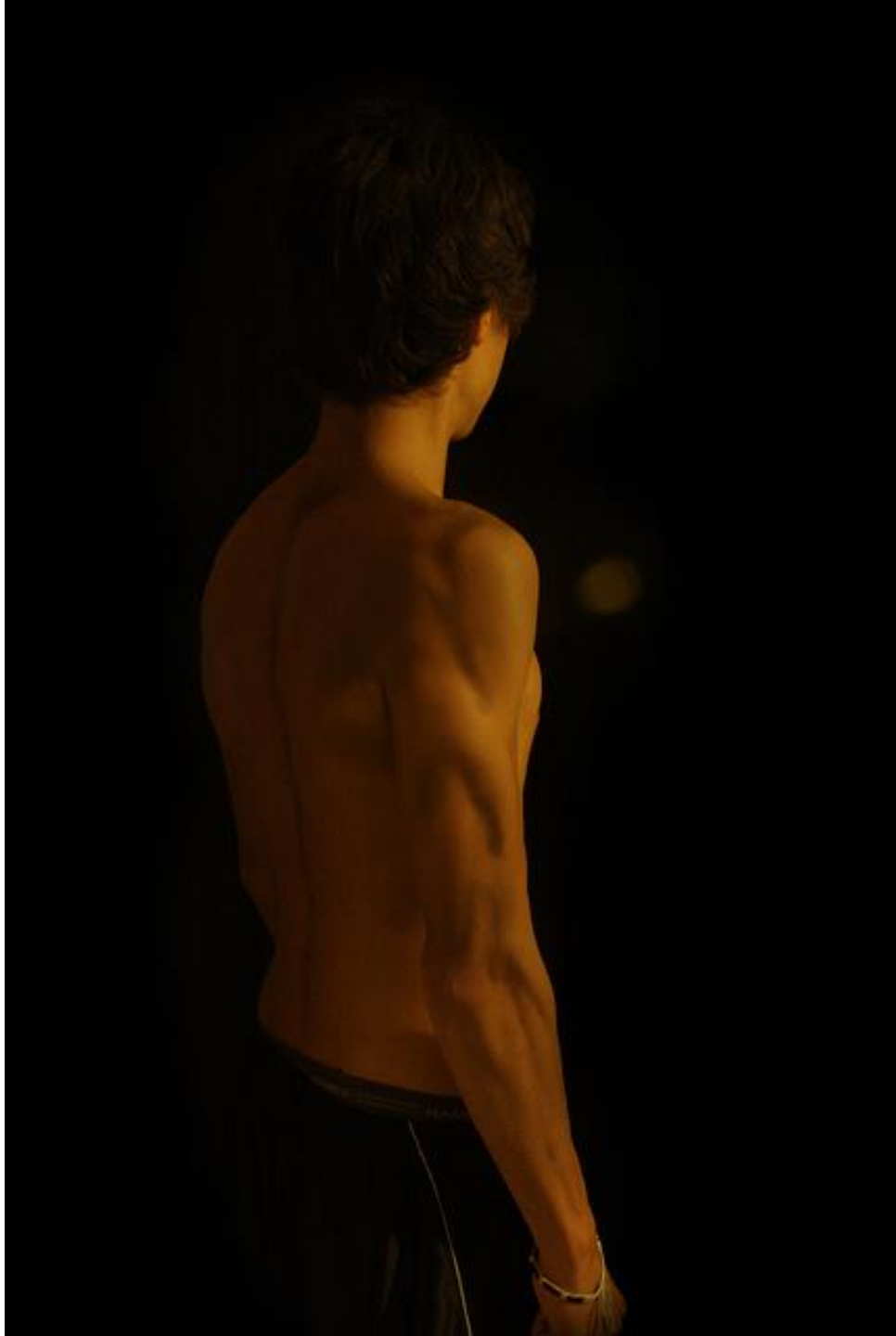


Ryker Wall

AP Portfolio 2014

Score: 5

Breadth













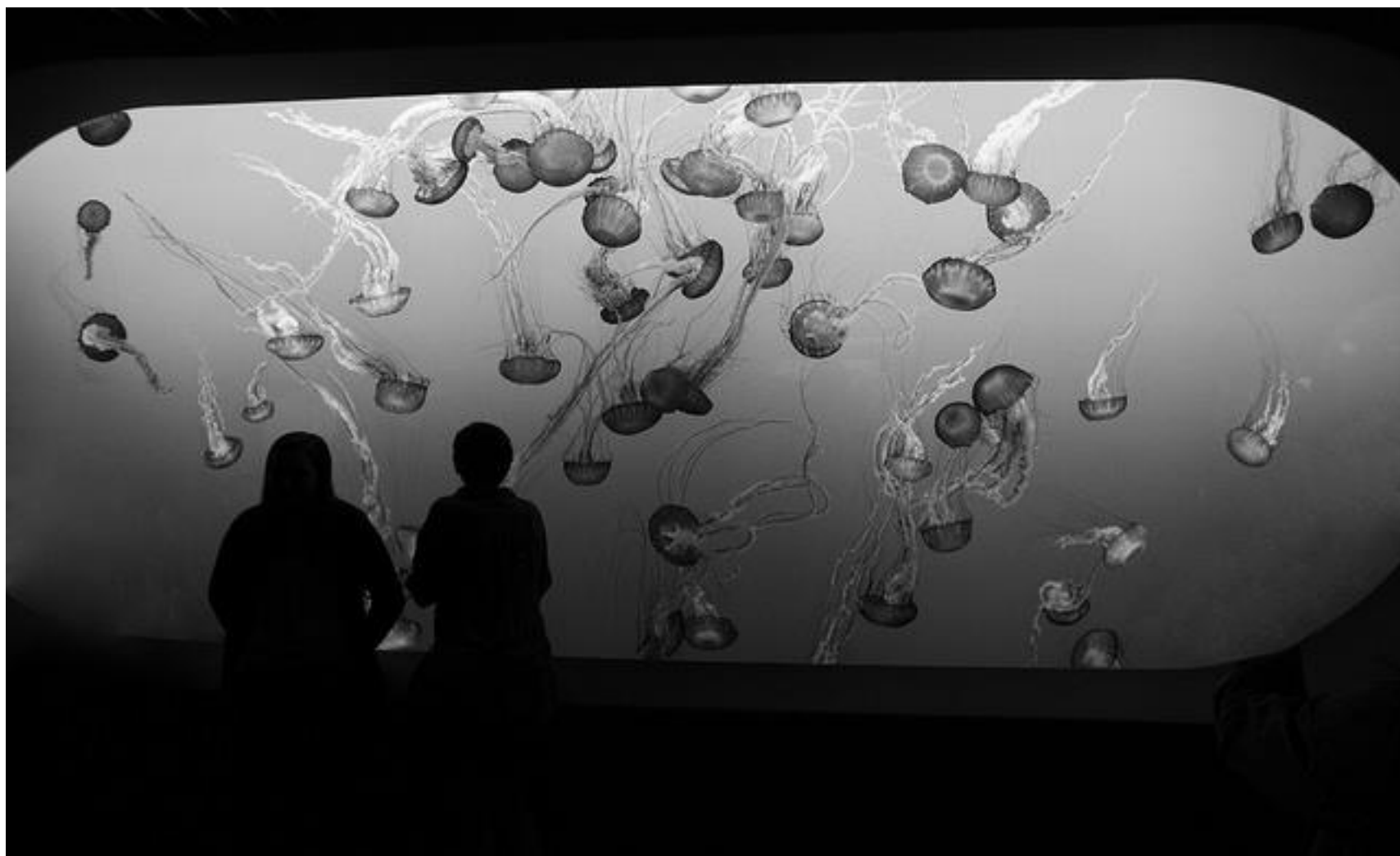












Concentration

It's hard to focus on one thing when photographing the world that surrounds us. I wanted to excise the urban and industrial aspects of life, and take a more primitive stance in my photography. My concentration focuses mainly on the sheer complexity of nature and how its countless processes work with such balance and unison to create beautifully functional scenes that parallel each other. It also focusses on how in nature, out of such chaos, comes order.

Beginning with image number 1, 2, and 3, we can definitely compare the three. A wave is a lot like a wild fire, plumes of smoke and foam roll in one after the other. Waves of heat radiate off the burning landscapes. All three images show the complexity of nature as well. In terms of physics, the hydrodynamics of a wave is simply unimaginable. To be able to counteract the forces of gravity, suck water up vertically, and then create a hollow cylinder is incredible. Images 4, 5, and 6 take a look at the larger picture and capture at the ecological aspects of Earth rather than specifics. Image 4's focus point is directed right to where the ocean meets the mountains, the center of biological activity. The stream that carved out the valley provides nutrients for living organisms in the aquatic biome. Life is literally centered and concentrated at the focal point of this image. Furthermore, the origin of such nutrients can be seen. Water is evaporated from the ocean, condensed into the clouds, and then precipitated into the valley where it is percolated. The diptych image 9 shows parallelism between two completely unrelated biological functions, a jellyfish and an eye ball. The tentacles resemble the muscles in the iris of the eye, and although have unrelated large functions, show how basic functions for contraction relate.

















