

Yoni Dukler

AP Portfolio 2014

Score: 5

Breadth













floating against the current





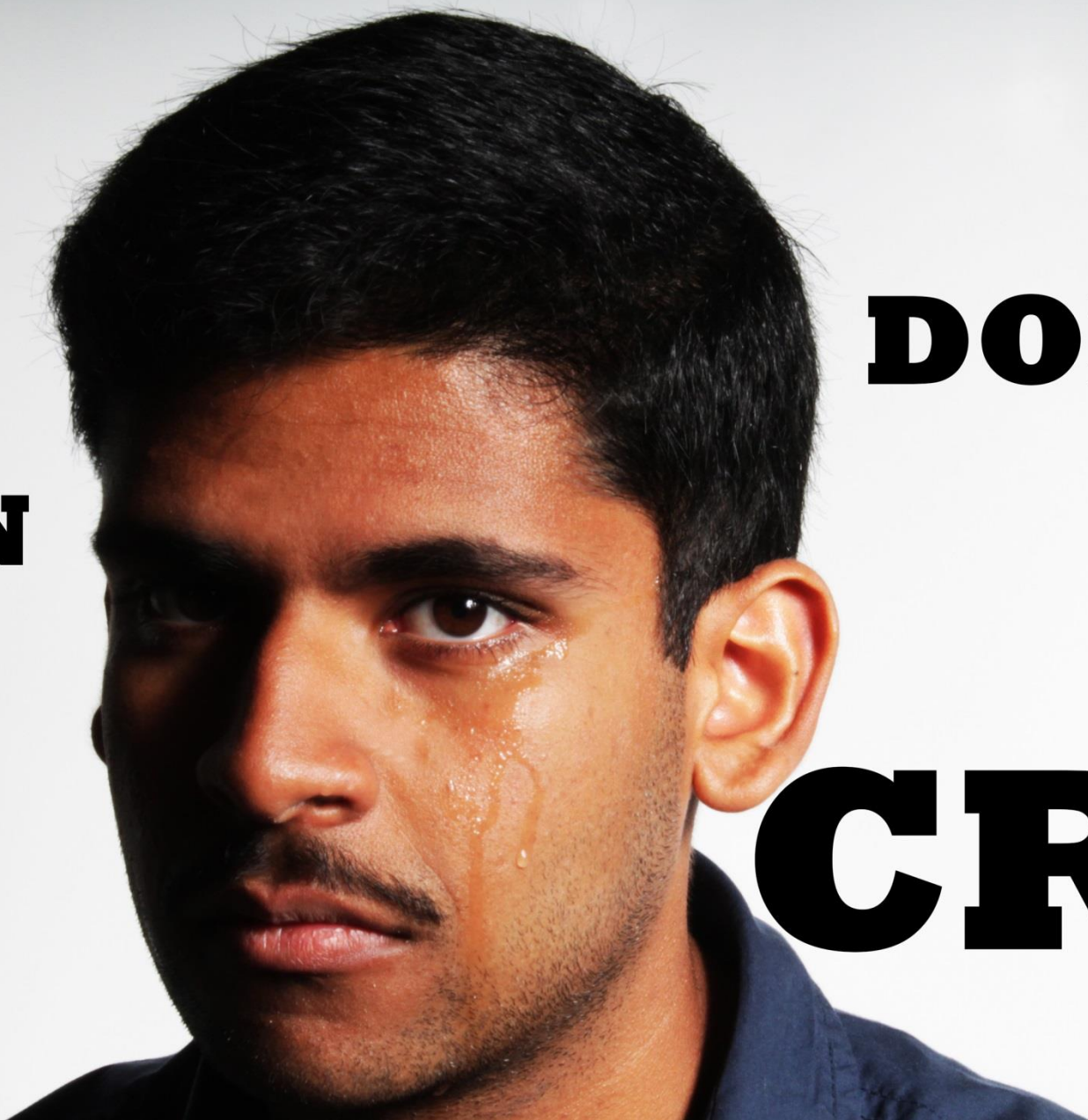


REAL

MEN

DON'T

CRY.







Concentration

- My concentration explores the hardship of farming through a consideration of the different elements it contains.
- In image 3 I used a shallow depth of field as a reminder of society's directed focus to the end product: the crop, rather than the hard work that was invested in the process.
- In images 8-11 I focused on the great isolation farming possesses, in which one is only facing the earth. Images 8 and 9 great landscape miniature the farmer and portrays its solitary state with the mighty earth. Image 10 and 11 serve together to emphasize that despite the fact that numerous farmers work the field, each farmer is isolated from the others. In Image 10 the farmers are working on the same horizontal line yet each is engulfed by his or her own work; in image 11 I spliced the picture into a triptych that further enhances the idea of isolation, note the shift from one horizontal line as well as increased margins contribute to the portrayal of the isolation as well.
- Images 5 and 6 describe the physical intensity found in farming: bending over to harvest the ground in prodigious speeds under the ruthless sun
- In image 12 I incorporated the text "day in, day out" as a last reminder that the battle against the earth doesn't stop. Farmers work for long hours day after day in the endless fields.

























Day in , day out.