



International Baccalaureate®  
Baccalauréat International  
Bachillerato Internacional

# Visual arts Exhibition Student A (SL)

Please note that these sample materials have been fabricated to allow for translation and copyright issues. These samples are not intended to prescribe how materials should be presented for assessment.

© International Baccalaureate Organization 2012

International Baccalaureate® | Baccalauréat International® | Bachillerato Internacional®

## Curatorial Rationale

The central theme of my artworks is time and its cycle of change. My artworks represent more than just a cycle of change in nature it shows my own growth and emotional change and hopefully the audience can use my canvases as mirrors to their souls and emotions. I've used features of nature to express the way time moves on and the way it changes people.

I've used a variety of techniques in order to do my pieces, ink, water colors and impasto. The Zebra, I used a brush so that the strokes would leave the impression of hair. There is a mix of warm and cool colors in my artworks which connects directly to the cycle of change.

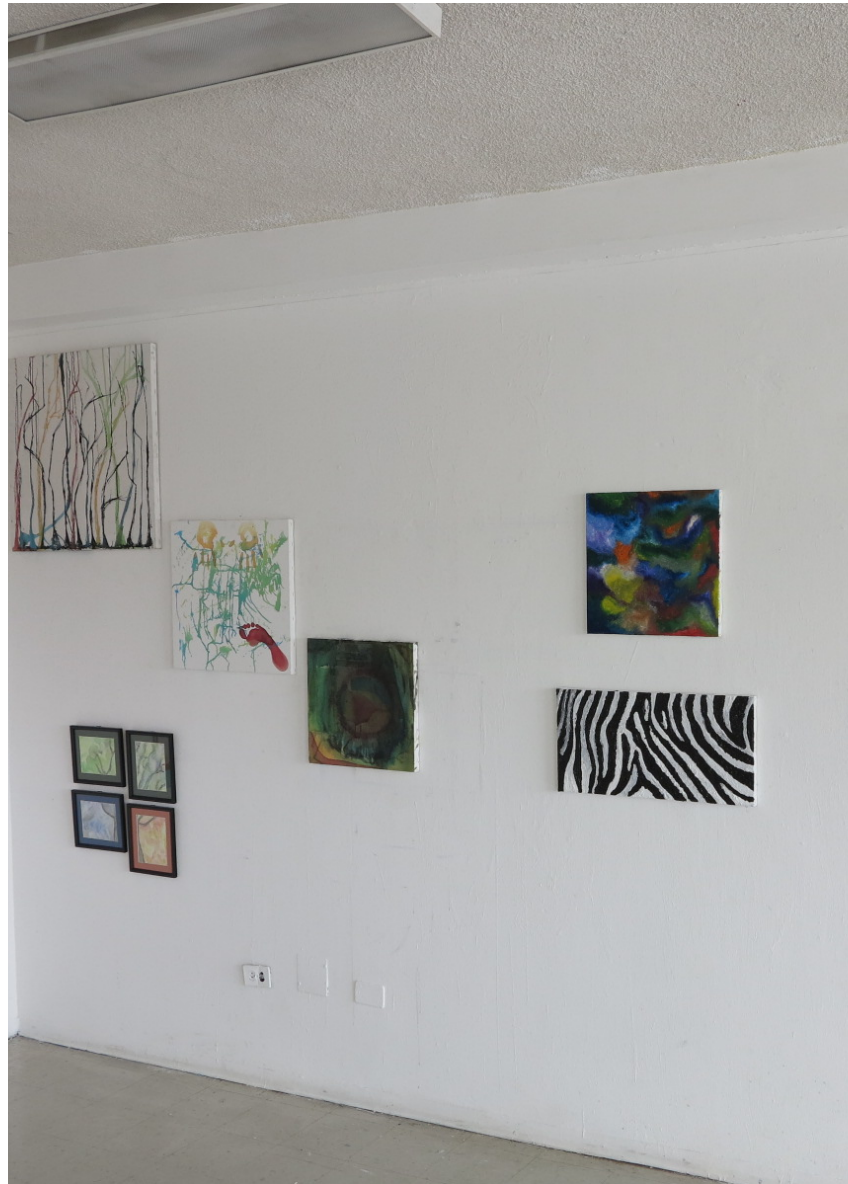
Ink was essential in some of my pieces; the liquidness of this material helped my canvases have fluidity and feeling. This feeling links to our train of thoughts and the emotions attached to them and how these are flowing through our mind and soul all the time. In some of my smaller pieces I mixed ink and water colors, it was a challenge to mix both of them because ink mixed with water it bleeds so I had to control the amount of water added.

The purpose of my artworks is to express my own life and the cycle of changes I've been and will go through like my artwork The Zebra, represents my own unique mark which no one else has just like a zebra print. The canvas is a mirror to my soul and that's the focus of my pieces and theme.

The Zebra piece is physically larger, because I wanted people to see how that one, holding the meaning about how important people are, was the more important of the two pieces. I worked very hard to set my exhibition up in a way that served the stories I was trying to tell. Influences such as Luiza Vizoli guided me through the theme of cycle of change through her use of trees and colors; she helped me understand the essence of the seasons which link into seeing one's own emotional seasons.

Word count: 353

# Exhibition Photograph 1

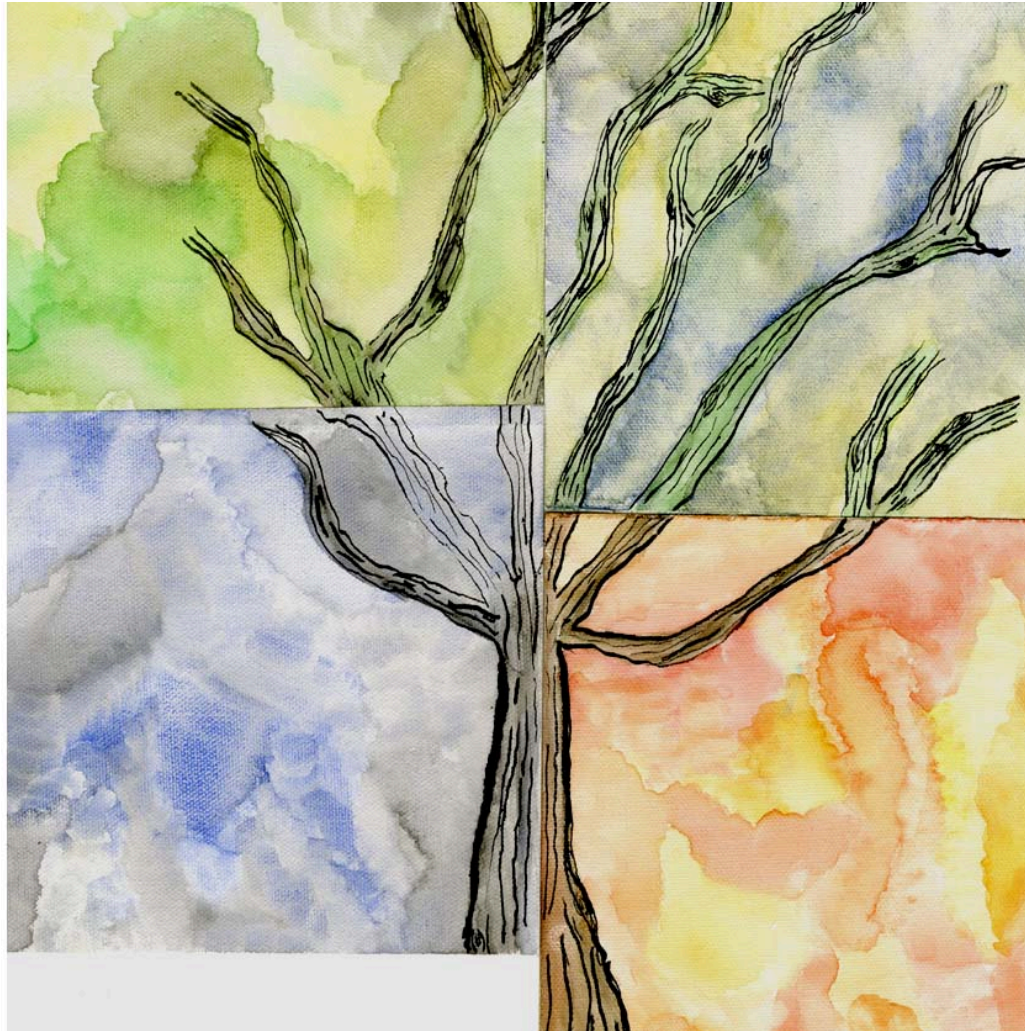


## 4 in 1

Ink, watercolor on canvas

35x12cm

Artwork 1



This is another piece using the metaphor of a tree to examine the stages of life. Each piece represents a different stage of life – going to college, getting married and so on – and it shows that they are all part of the same person.

# Traces

Ink

50x50cm

Artwork 2



This piece is about the way people leave traces of themselves in our lives, whether they help us or hurt us, and how even if we never see them again, we still remember them.

# Leafless

Ink

70x70



This is about the way that one mistake can seem overpowering when you are in the midst of depression or just a bad point of your life.

# Through a Chameleon's Eye

Ink

40x40cm

Artwork 4



The way a chameleon's eyes are positioned means that they can look to either side and see two different things at once. This piece is about the importance of being open-minded to people, and of making sure that the first impression you get of them isn't the only one you consider.

**The Galaxy**  
Oil on canvas  
40x40cm

Artwork 5



Earth is a very tiny bit of the universe but to us, it's the most important. Each individual thought and feeling inside the brain is comparatively tiny, but again, it's important to us.



## Ze-print

Oil on canvas

60x30cm

Artwork 6



Each zebra's print is unique. This is a sister piece to The Galaxy, because this one shows how important every individual person is, even if they are insignificant.



International Baccalaureate®  
Baccalauréat International  
Bachillerato Internacional