



Exhibition

IB Visual Arts HL

KYLIE KELLEHER

Curatorial Rationale

I explored many different concepts for my exhibition before finally choosing a focus that I felt best expressed my respect for multiple art forms. I combined my preference for photographing people using freeze motion with my passion for lighting design. Throughout this process I designed, hung, and focused multiple lighting plots that I felt had sharp, interesting geometry as well as vibrant colors. My experience as a lighting designer as well as my heavy work in theatre also allowed for me to enhance the environment for my models. Along with studying chiaroscuro and baroque art, I heavily researched multiple photographers and painters in order to better refine my own style. I specifically looked into artists like Bill Wadman, Lois Greenfield, and Patricia Di Bella. Wadman and Greenfield's photos of dancer's motion inspired me to use models from my school's dance team and Di Bella's paintings of backstage life in theatre influenced my decision to capture the technical aspects of lighting.

My work has extremely prominent use of lines and movement. I utilized heavy amounts of fog in many of my photos to make the beams of light visible. By doing so, the shapes created by the lights emphasize the natural lines created by the dancer's bodies. In my pieces Intersection, Reach, and Liebe this is especially prevalent.

Curatorial Rationale (cont...)

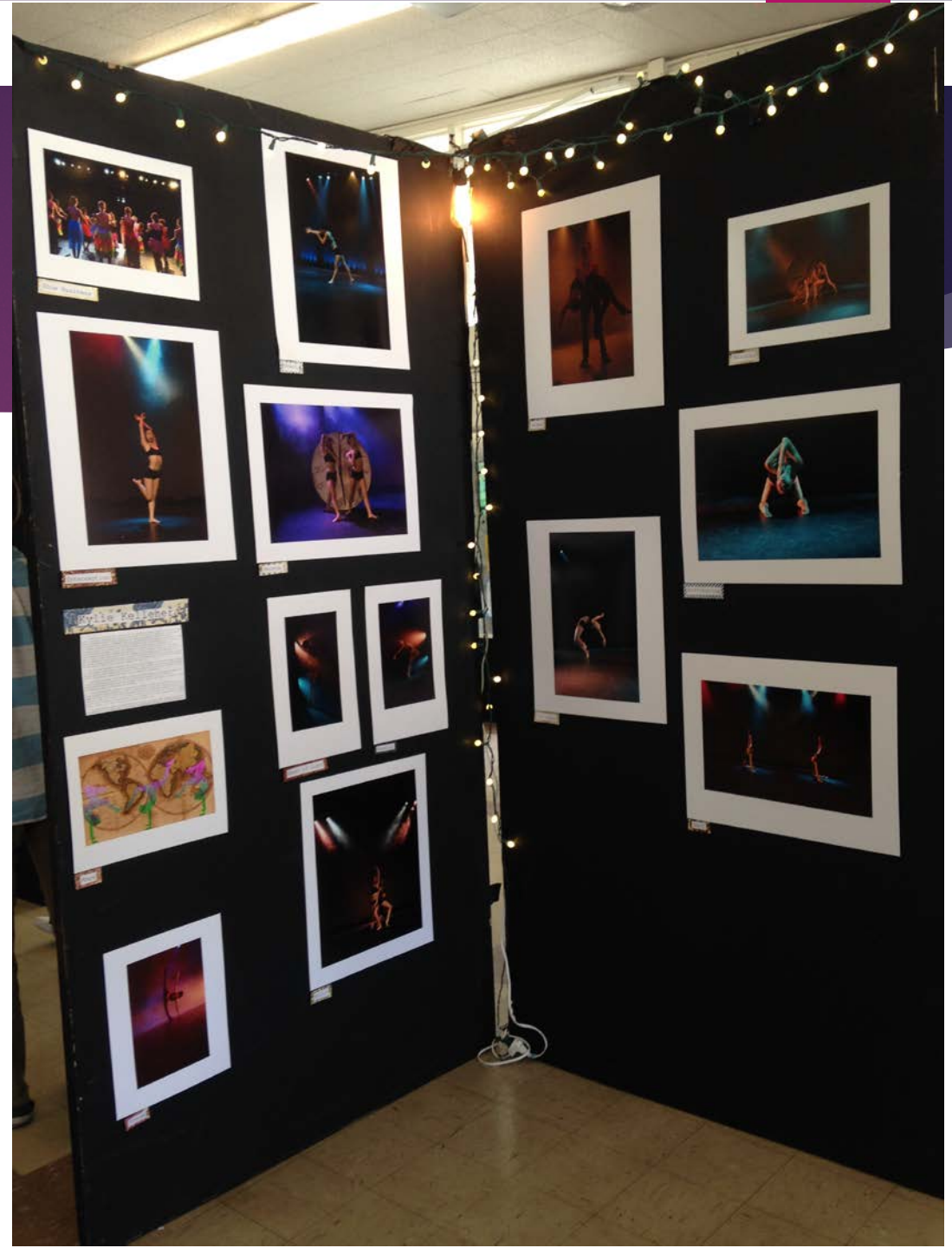
The use of various color schemes throughout my photographs also captures the power of both lighting and color in an artistic environment because of its ability to manipulate the mood. Through the use of deep vibrant colors I was able to create feelings of suspense, anger, or love among my subjects.

For my exhibition I chose to stick with my theme of lighting by decorating the panels my photos were placed on. First I draped string lights over the panels so that if people walk up close to view the photographs they will be directly under the lights. In the back corner of my panels I also hung an Edison lightbulb because I liked the vintage look of the filaments, and the warmer glow it produced. This also complimented the photo it was closest to, Liebe, because of the warm, orange tones.

While exploring dance, I also was able to delve into the beauty, strength, and vulnerability that can be felt through the world of dance. This allowed for me make connections to feminism and the struggle of sexes. I began to utilize color to capture not only lines and geometry, but also to create feminine and masculine color palettes.

My photographs capture my appreciation of dance, theatre, and lighting as well as the manipulation of mood that the audience can experience from all of the little details.

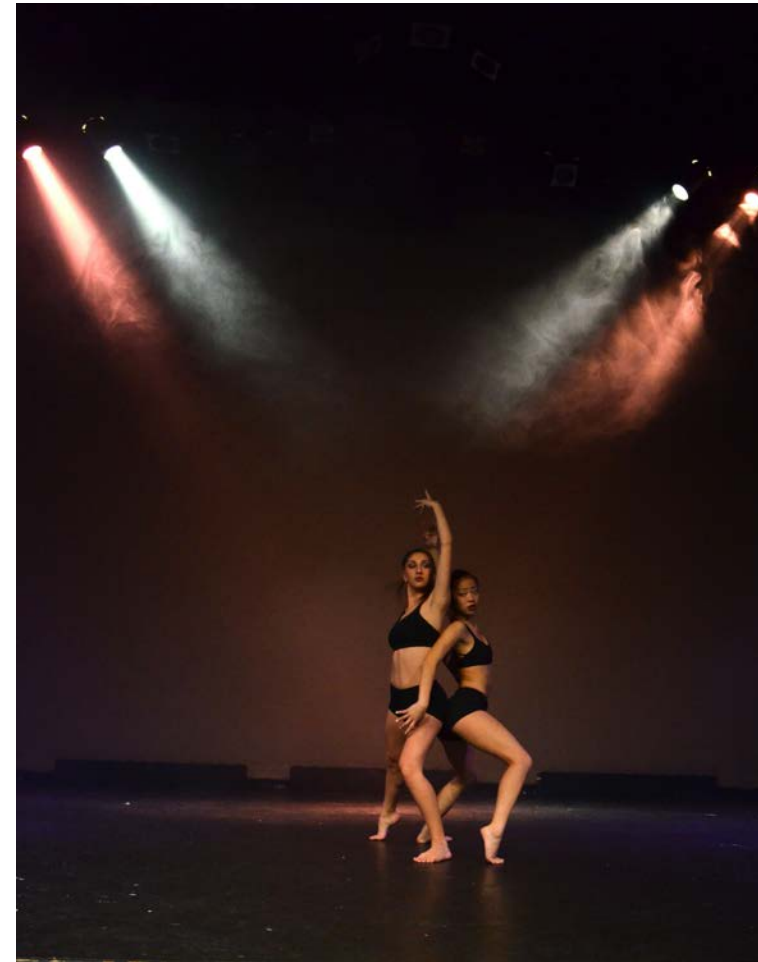
Exhibition Set Up



Unity

Medium: Digital
Photography
33.9 x 43.2 cm

In this piece a majority of the visual interest arises from the unity of the dancers rather than the lights. The two girls' bodies compliment each other while positioned where the four beams of light would cross. This photo was meant to be empowering to women. For this reason I used a peachy-pink tone and white light because of the delicate tones. Having the girls back to back creates an effect of support and balance.



Zwei

Medium: Digital
Photography
40.6 x 26.9 cm

The title of this photograph, *Zwei* is strongly associated with my first piece *Unity*. *Zwei* is German for two. This emphasizes the individuality of the two young women by putting them each in the center of separate beams of blue lights. The girls' positions of having their legs outstretched upwards not only compliment the lines, but also attract attention upwards. The blue beams are connected only by the fragile beams of white light which cross.



Collapse

Medium: Digital
Photography
26.7 x 43.2cm

Collapse captures the delicacy and beauty associated with the female body. Her pose is both vulnerable and strong, contradicting itself. The pseudo-falling is made stable by the balance and control the dancer has over her own body. This photo brings the attention more to the body and the small amount of blue light seen through the beam of dissipated fog.



Intersection

Medium: Digital
Photography
28.1 x 43.2 cm

This picture captures the intersection of not only beams of light, but also of the dancer's body. The exaggerated pose of the back arched slightly back and arms in the air gives again a feeling of strength, while her hands are relaxed and she remains balanced. There is a sense of tranquility between herself and her environment, as well as inner confidence that viewers can interpret from the pose.



Angel of Light

Medium: Digital
Photography
15.8 x 27.9 cm

For this photo, as well as Beaming I used lights attaches to an eight foot pole to create the effect. For Angel of Light I used this to essentially backlight the dancer, making the features of the face almost indistinguishable. I aimed to focus on the strength of her body and the pose, as well as the playful effect of the blue and light pink tones.



Beaming

Medium: Digital
Photography
18.5 x 27.9 cm

The light pink light shining on the upper body of the model created a majestic and positive effect on the dancer while surrounded by the cooler tones of purple and blue. The title Beaming was meant to be a play on words because of the beams of light, as well as the verb beaming which is slang for smiling due to the positive emotions I hoped to evoke.



Minutes

Medium: Digital
Photography
27.9 x 22.7 cm

For this photo I utilized complimentary colors as well as lights coming in from various, dynamic angles to emphasize the levels and lines created by the dancers' bodies. The clock is emphasized by one orange light to also create visual interest of the shadows. This clock photo I titled Minutes because the blue beams were reminiscent of water, under which movements are slower and fluid.



Suffocating Medium: Digital Photography 43.2 x 31.1 cm

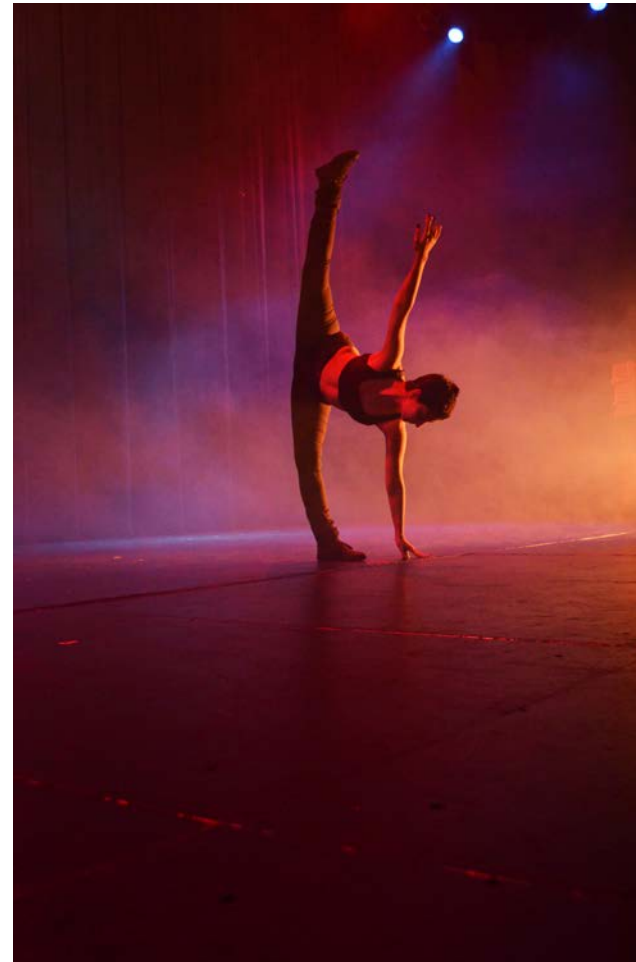
Suffocating again has a balance of vulnerability and strength. Her hands on her own neck as she bends backwards can be associated with the self infliction of expectations. The ocean blue tones keep it somber and intensify her expression. Both the blue and orange tones reflecting on her skin emphasize warm and cool, strength and weakness.



Traum

Medium: Digital
Photography
18.5 x 27.9 cm

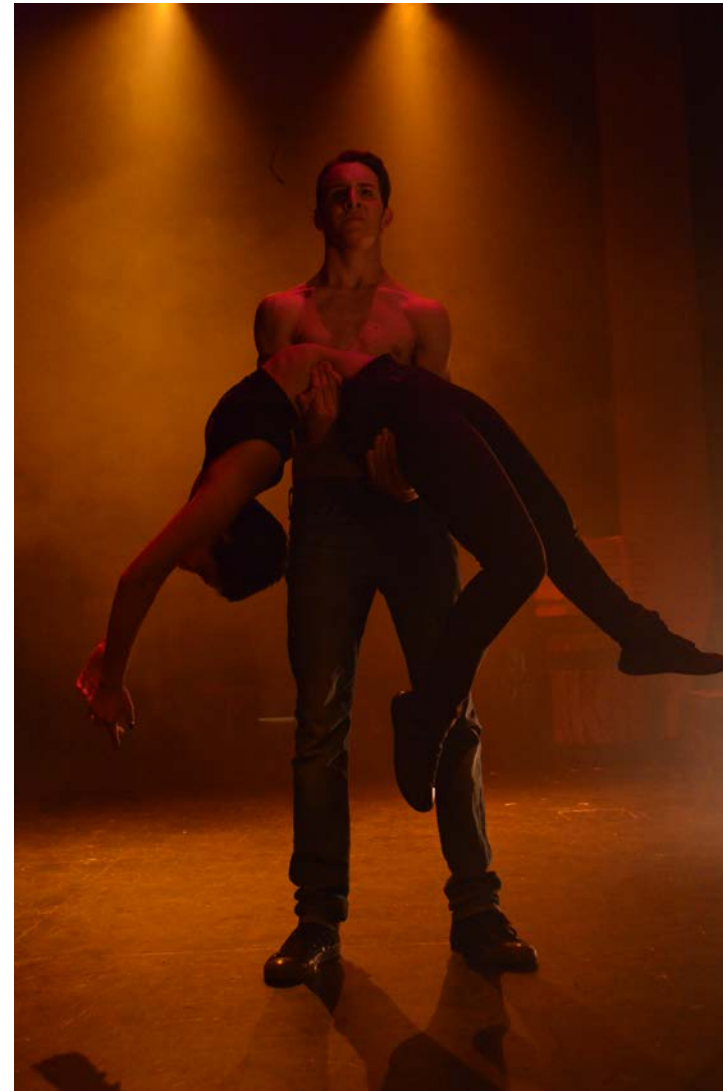
The heavy fog and muddled effect of the orange, blue, and red lights inspired me to title this piece Traum, which translates to dream in German. The rolling smoke as well as the pose held by the contortionist create a fantasy effect.



Liebe

Medium: Digital
Photography
26.9 x 40.6 cm

Liebe, meaning love in German, captures a story through dance. I chose to use all the same tone of orange lights and even fog to add to the drama of the scene I was building. Although many of my pictures were focused purely on the empowerment and art behind femininity, this picture was meant to capture the mutual balance and respect that can be achieved through both sexes.



Seconds

Medium: Digital
Photography
43.2 x 33.1 cm

I titled this photograph Seconds because of the theme of time. I used the color purple because of it's connotation to royalty to emphasize the models' strong poses. The clock prop as well as the flow of the purple lights through the fog gives the effect of just a frozen moment of life.

