



International Baccalaureate®
Baccalauréat International
Bachillerato Internacional

Visual arts

Process Portfolio

Student C (HL)

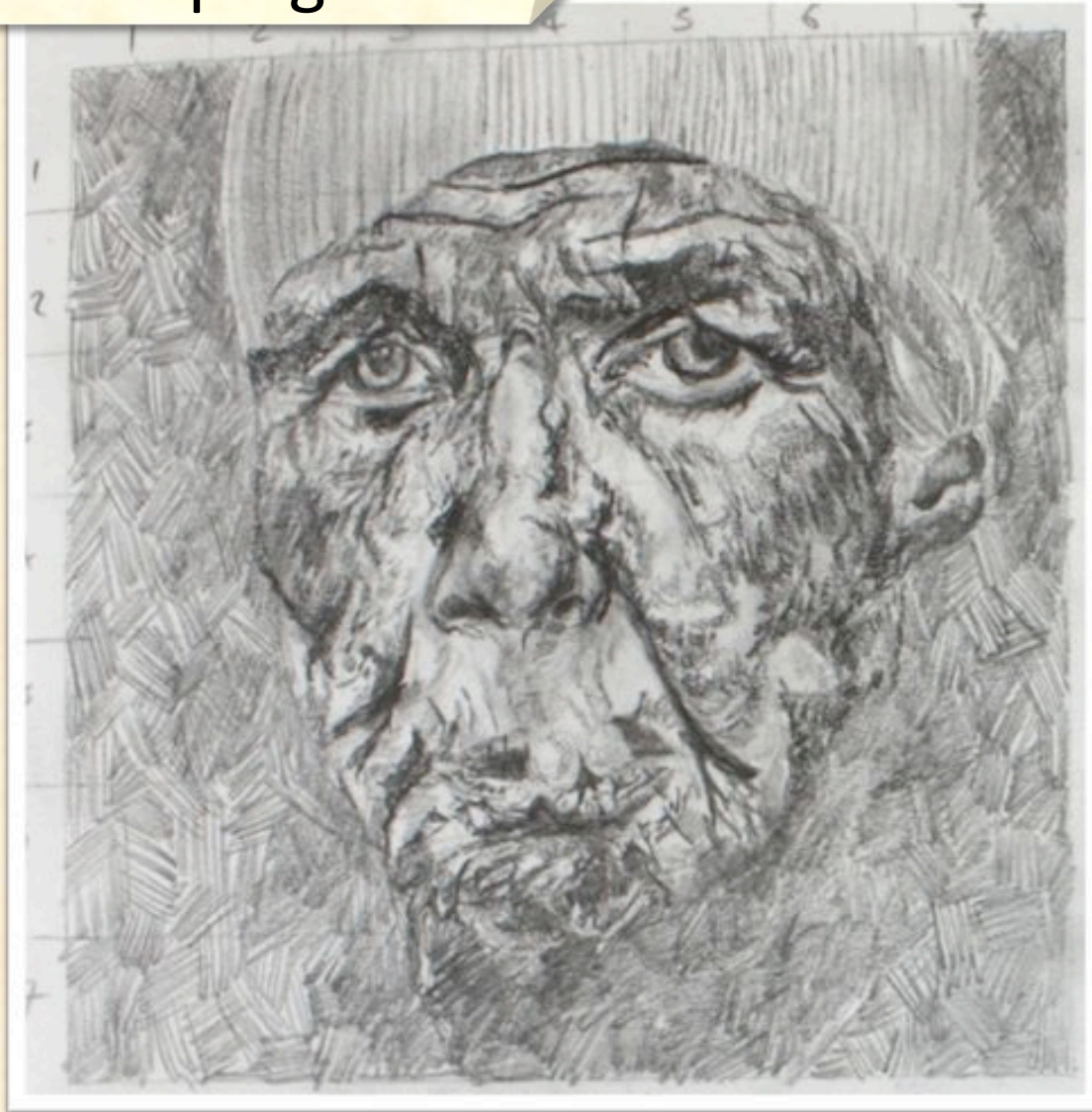
Please note that these sample materials have been fabricated to allow for translation and copyright issues. These samples are not intended to prescribe how materials should be presented for assessment.

© International Baccalaureate Organization 2012

International Baccalaureate® | Baccalauréat International® | Bachillerato Internacional®

Developing ideas

Sources: Image inspired by Liz, Skid Row (Los Angeles) by Lee Jeffries



Here I have drawn images from photos which I think work well within my theme. Firstly is my drawing of the old woman with smoke coming out her mouth. I like how the photograph is being obscured by the smoke but I also like the shading which appears harshly over the face and back around.

The young child was drawn using the pencil media. I tried to capture the darkness created around the child as it was atmospheric to the piece. Although this image is not obviously obscured, I like how the shading and intense lighting helps reveal the covert nature of the image. In developing my own body of work, I plan to use images which have large amounts of shadows and shading worked into them. This will enable me to work on textures and tones which should allow for an interesting result to be made with my chosen material. When I pick what image I plan to do, I should think about the texture that I am able to create on the face.



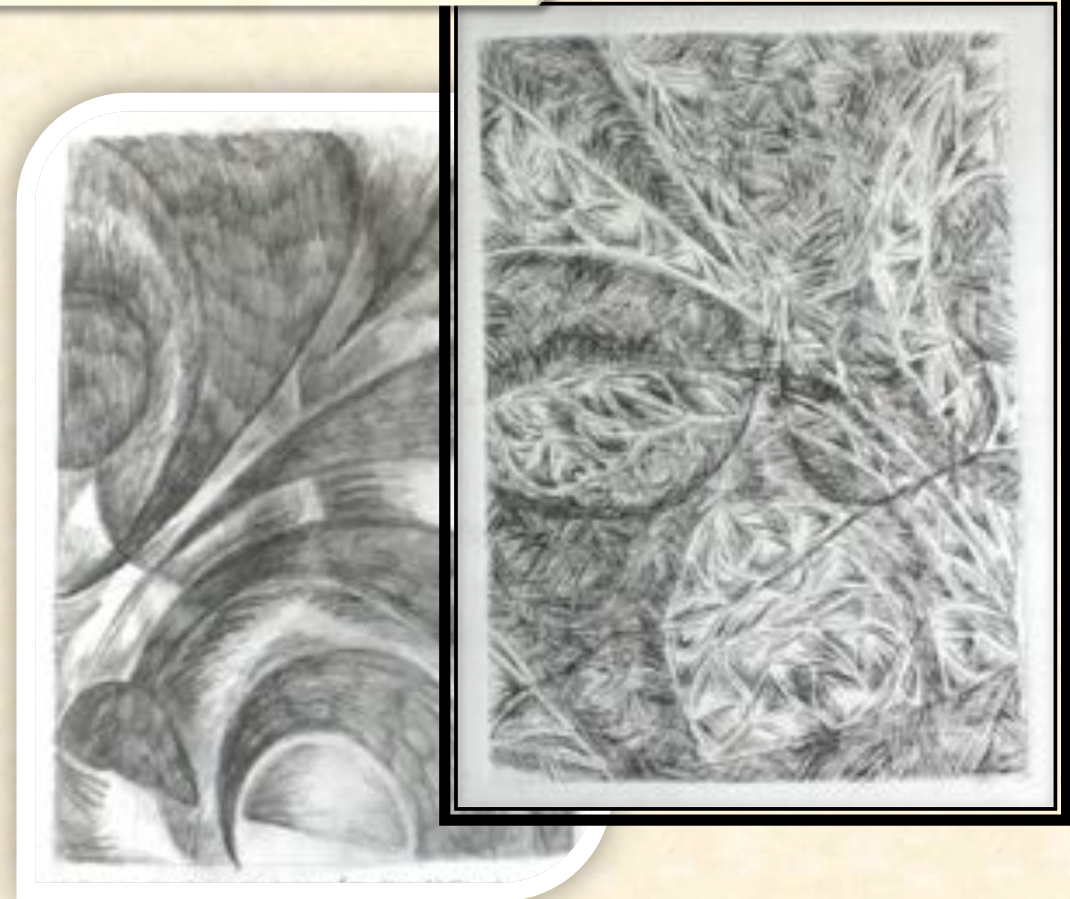
Sources: Image inspired by the work of Lee Jeffries

I am interested in images that make the audience question, or look deeper into the image for meaning, so these particular images appealed to me because the subject appears concealed or shrouded. Each of these images are obscured in different ways. I was also interested by the reflections which make the faces appear different sizes and at different angles. I may want to use a similar idea for my own photographs.

Observations and experiments with media

These are my sketches from life drawings. They are created in the pencil media which allowed me to create the tone and shadows, which were present on the model. The model had material draped around her in some of the images which slightly covered her. The lighting was harsh and obscured her as it created shapes on the body through this. This idea of obscuring an image is already seems to be something of a recurring theme in some of my work and one which I would like to investigate further.

These observations have helped me study the human body and develop my ideas. I am most likely to do something based on the human figure or focused on a particular area; for example the face. Using the figure, I shall now go on to test other medias and ideas.



Here is my observational design for my etch. A projection was thrown over the model's body which obscured her figure. I will use this design as the outline of the etch. When I come to etching, I plan to use a variation of lines and movements to express the body. I will also need to define the skin with the projection on and and the bare skin. This follows the theme as the body is being obscured; it takes a second to realise what the subject of the piece actually is.

The image above is my first attempt at etching using this subject. I enjoyed the freedom of lines which I was able to create. However, I found it hard to distinguish the body from the lines. I was concerned that the piece would look as one pattern rather than a figure.

Observations and experiments with media



Shooting grandma

This was my first photo shoot with my grandma. I have taken inspiration from my initial ideas and have tried to explore the idea of obscuring her face. I did this by using ribbon and wrapping it around her. However, I wanted the features to be bent and stretch, and ribbon didn't provide this due to its strength. Instead, I decided to use boning to sculpt the features into distorted positions as this was harder and stronger. I focused on close-ups of the face, attempting to show my grandma in pain. Although I like those ideas, I feel I will be limited to the type of media I can use to create an effective piece. I shall now go on to explore which media will work with my selected images. The media I predict to work well is etching, as I think this will best capture my grandma's textured skin.

Observations and experiments with media

Here is an example of an observational I have created while experimenting with different media to enable me to practice capturing the human body. Firstly I have done a tea-stained page with charcoal and white chalk over the top. Whilst the tea stain was wet, I began to work into the image so the lines glided like velvet across the page. I added shading by using the charcoal on its side to get a full sweep across the page. In further endeavours, I experimented with mix media; sticking tissue paper and brown wrapping paper to the board to create a base. I used pencil, chalk and bleach to produce the majority of the picture. Still life was incorporated into parts of my design as well. These observations helped me get an understanding of which media works well with the figure and what I like to work with.

With the final media experiment, I created the figure using a micro print. Here I began by rolling ink out on a board and placing the paper on top. I then created an observational in the media. I liked working with this media as I was able to draw into the image, yet was still able to capture softness with the print. I smudged into the image to create shading and tones as these made the piece accentual. From doing these experiments I believe working with a figure is a definite option for me.



Artist studies



Artist Lucian Michael Freud mainly worked with paint and etching. Here I re-created an etch of an old man who appears in deep thought and concentration. The image could have relied on observational or a photograph of the subject. It is very still in atmosphere as well as motion and lingers with you after a moment. The etch is in black and white and these tones reflect the mood of the piece. The image is vivid through the lines created and is eye catching in its features. The lines create many rhythms and yet they are silent. The shapes of the face are very free yet restricted by the features. The lines create the texture and the overall design of the work is not uncomfortable but is also not pleasing as it lies in the middle. The piece was probably improvised as it went along, due to the lines appearing free. However, additional photographs and sketches went along with the piece and it was probably quite quick to produce. I hope this image will allow me to develop my etching skills. I hope to take some of the lines and the way they have been created from this and replicate it in my work.

Lucian Freud's pregnant oil painting

I began by looking at Freud's etchings to help me develop the way I produce my work. As my ideas have now been molded into oil painting, I felt it was important to produce an image that could inspire the way I paint. I decided to use this image as I liked how the colours are used and mixed. I also liked the shading and tones that were created. As Freud has chosen a pregnant girl as his subject piece, it adds sensitivity as the image projects the idea that the subject is too young or was not supposed to be pregnant.

The subject matter is treated realistically, however the piece does not follow the typical 'human flesh' colours. Instead the image has been treated delicately and the colours have been drawn out and extracted from their typical shade.



The colours used are harmonious and go well together as they are calming and cool, reflecting the subject. The shapes created are very organic and harsh lines are not used, making the image mellow. Previous sketches could have been done but I imagine the piece probably took quite a while to produce, yet at times it has a lot of movement in it, suggesting a quick pace could have been used. Freud has a skill of creating a piece of which the details of the image could almost be argued to represent the internal body structure, for example the muscles. His work is very analytical in this way. The work is very still, not just through the action but through the silence of the image. The girl looks almost in pain. This is reflected with the almond colours, which could also suggest her pain is nearly over, or the pain she is feeling is emotional rather than physical. We do not understand her story but it seems it could be very painful. In my own work I hope to be able to produce some emotions with my images – I don't want the painting to appear flat or neutral.



Sources: Lucian Freud: Head of Bruce Bernard, 1985 & Pregnant Girl, 1961

Photo life drawing

Here is my first A3 design for my final piece. Although I have been developing an etch as my final piece, different media will be experimented with. Along with my grandma, my other choice in subject is a nude model. This image was picked mainly due to shading and tones created. Although I think etching could be used to create this image, I think the main media this piece lends itself to is paint (most likely oil). As I drew the image, I tried to capture the tones and highlights that were created by the harsh intended lighting of the room. The hard lighting adapted the image to my developing ideas of obscured image. When I began to add in the shading, I found the image starting to become obscure and the figure became slightly covert – especially the arms. Although I like this image, I do not think it will be used as my final selected piece as my other images, to me, are better suited to my style of working.



Portrait of Grandma

Here is my final design using my grandma – this drawing as made me more confident that I do not want to use her as my subject. The image becomes obscured in itself because of the wrinkles and shading on her face. As I began to draw them, the features began to get lost. Although this does provide a good way for the image to take on the theme, I do not like what the drawing came out like compared with my previous designs. Through my previous designs, I feel as though my mind has been made up and I will be going down the root of using the nude model for my subject.

Observations and experimenting with media



Oil paint: Through my media trials, I planned to explore using oil paint. Previously I have used it with a palette and knife to create a thick retextured effect which stood off the page. Although I did like this idea, I felt I could not capture the detail that I hoped to. Here I have tried to achieve a mixture of paint thickness with detail. The image was drawn in life drawing and I began to add paint at the same time. I liked the idea of using different thicknesses together, however I thought it made the material draped over her look weaker. To improve this, I will have to experiment with ways of mixing the two thicknesses together. This will mainly come through the colour scheme. I shall also go on to mixing different colour schemes together and experimenting with different ways of applying paint.

Life drawing: As I have decided to do a nude figure for the subject of my final piece, I felt it was important to explore the human body through observationals. I used the media of pencil and focused on the shading and tones given on the piece. This will be important in any choice of media used. With oil, I can capture the shading but also different directions of how the paint is applied. With pencil, I have varied the direction of tones created with added interest. I tried to not just follow the shape of the body with the tones as I did not want the piece to look too directional.



Nude etch: This design was used for another etch as a media experiment. I wanted to see how the media works on a nude figure. Earlier on, I attempted a nude feature using the media etching but I zoomed in on the body so there was no outline of the silhouette. I wanted the outline of the body to be present as I liked the effect it gives and it enables you to see it's a figure easily.

Artist studies

Jenny Saville

I have been extremely inspired by the work of Jenny Saville. Using her work as a starting point I took inspiration and developed it into my own work. I mainly adapted the colour scheme for my image and thought it was successful. I had a previously experimented with cooler colours and prefer the warmer colours as I think it works well with the image. I plan to use this colour scheme for my final piece and shall continue to try different shades on top in different thicknesses to create texture.

I also looked at another painting by Jenny Saville. This was done intentionally to help me capture her style and examine the colour schemes she uses in her work. The subject of the image is a woman in nude sitting on a stool. The image is painted from an uncomfortable angle which makes the image slightly disturbing to look at. The image makes you look at something which wouldn't be seen as typically beautiful and twists it into a light where you can see the beauty in the image.

The colours used are contrasting and clash with each other, with black to outline key features. The colours are very bold and vivid, making the piece eye catching. The shapes are very organic due to the nature of the subject matter. The paint appears to be applied very thickly and layering was probably done to create this effect. The mood of the image is atmospheric and the picture stays with you after experiencing it. The image has given me inspiration in my own work using the idea of lining particular sections with black and layering the paint on top of itself to create a thick base. I shall also try to incorporate many tones and colours into my work like Saville does.



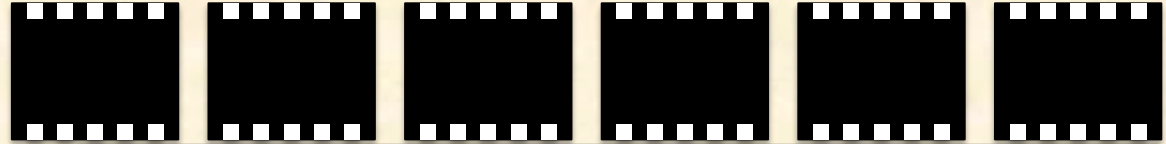
Sources: Images inspired by 'Untitled' by Jenny Saville 1992 http://www.all-art.org/art_20th_century/saville1.html



Work in progress



Photography: My first photo shoot



Portraiture

This selection of thumbnail shots are from the first photo-shoot I have where I chose to focus on portraiture photography. I set this shoot up to include a model at work in an art studio. I think these shots have worked out well and I have a wide variety I can edit.

Photo points:

- I like the use of colour in the shots, it makes them stand out.
- I have experimented with different angles – I think the shots from unusual angles look more effective than shots that are straight-on.
- I took the shots of the subject while he was working from a variety of poses.



Edits



I really like how well this shot has turned out. I like the difference and contrast between the white and black paint on the screen. To edit this shot, I increased the contrast. This has given a wider variety of shades in the shot and really makes the black stand out.



I really like the concentration on the model's face in these shots. Again these shots perfectly resemble my environmental theme. I like how the paint on the screen is covering the subject's face yet you can see one eye which is captured by the light. I hardly edited these shots other than increasing the brightness so he became visible behind the screen.



This is one of my favourite shots from the whole shoot. I really like how well the light has captured his face and I like how he is slightly out of focus in the background. I particularly like how he is focusing on the paint yet it looks like he is looking into the camera. To edit this, I increased the exposure a tiny bit to make it a little bit lighter.

To edit this shot I increased the temperature setting. This made the colours seem warmer and it gives a warmer feel to the shot. I increased the brightness slightly to brighten the shot up. I really like how he is holding the paintbrush in his mouth and concentrating on something we are unable to see. This makes the shot more interesting.

Edits

Experiments: I also experimented with placing clay on the subject's face. I really liked the shots when the clay had dried and started to crack and began brushing off. I managed to capture it by increasing the shutter speed. I used a black backdrop to create a wide contrast between colours. I used a light to highlight sections of the face. I think this has turned out well.

Edits: This image (bottom left) is another shot I am extremely happy with. I decided to move the lighting under his face highlighting his mouth and nose. I think this has worked really well and I am pleased with the quality of the shot. I again think the cracks in the clay made his face look very unique. To edit this shot I have increased the shadow setting to darken the shadow on the left hand side of his face. I like the small white dots on his left eye as I think they really stand out from the darkness.

The hand-on-face shot is again another shot I am pleased with. I timed the shot perfectly and increased the shutter speed at the right time to capture the flakes falling off his face. To edit this shot I increased the exposure a tiny bit. This made the falling pieces of clay stand out. Minimal digital manipulation was needed with this image and the lighting was perfect. I really like how his eyes are closed as it makes the shot softer. I am really happy with how well I captured the movement.

I created a series of photos for this edit; combining three individual photos that looked boring by themselves. The only form of editing I have done is to crop each shot so it is positioned correctly. No major editing was required because the lighting created a nice setting.

This shot is my favourite from the shoot. It is in colour, however it is hard to tell because of the lack of colour in the photo. To edit this, I increased the shadows and the contrast. This has made the background even darker, only exposing the face. I used a light to shine on the face, which has highlighted the far side of the face. I like how her pink nail varnish is the only colour in the shot.

Edits

F-Stop: f/3.5 Exposure time: 1/40 sec. ISO:800

I took this shot inside the Tate Modern. It was when I was going up an escalator with other people going down on the opposite side. I really like the black patterns created down the centre of the shot. To edit this, I increased the exposure and contrast. This made the dark areas in the shot appear darker which resulted in a wider contrast.



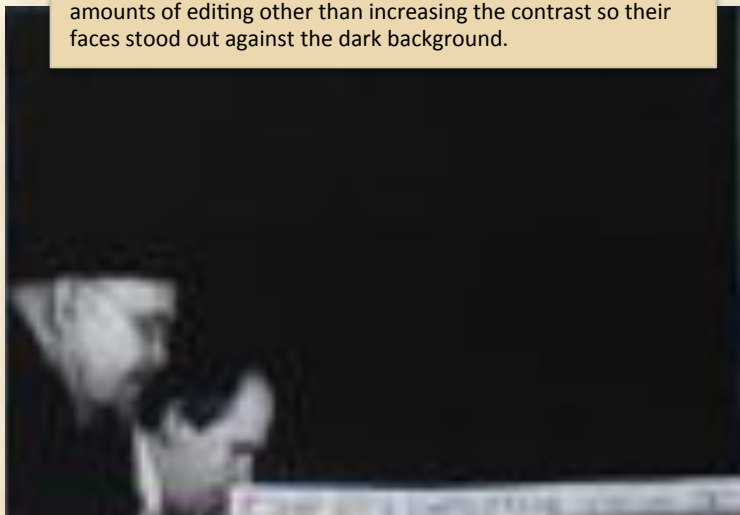
F-stop: f/15. Exposure time: 1/30 sec. ISO:800

This is my favourite edit from London. I captured this shot outside the Tate Modern of a man blowing smoke from his mouth. This is a side profile and I have highlighted this shot as it will be the one I will use for my finals. To edit this shot I just increased the shadow's setting which made the right side of the photo darker, creating a wider contrast.



F-stop: f/5.6 Exposure time: 1/30sec. ISO 800

This photo was captured inside the museum, whilst there were no lights on, making it really dark. I was lined up next to these men so I took this shot by chance. I didn't need huge amounts of editing other than increasing the contrast so their faces stood out against the dark background.



F-stop: f/5 Exposure time: 1/80 sec. ISO: 800

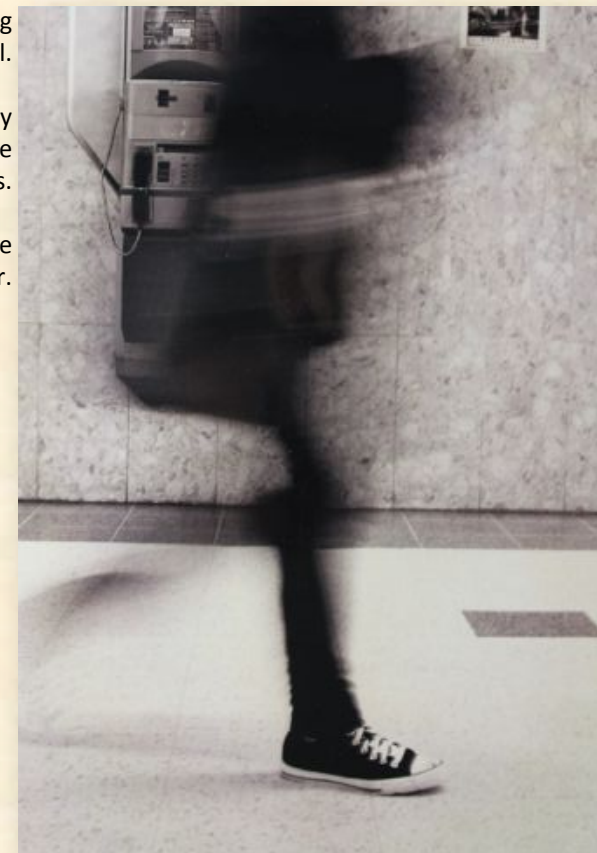
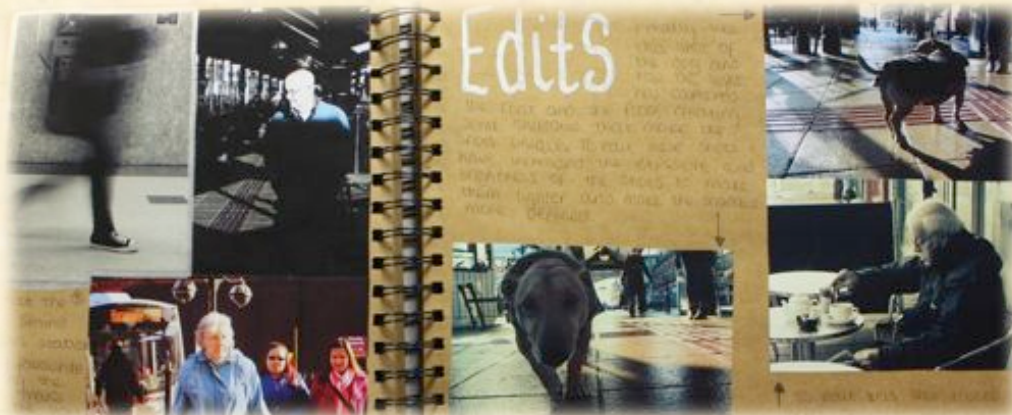
One thing I really like about this shot is how everything is out of focus apart from the man. I also like how there is a reflection next to him. I think that this image would be quite dull if there was no bus in the background. To edit this image I increased the brightness and the contrast making the shot brighter and more vibrant.

Edits

This first edit is my favourite shot from the collection I took in the town centre. This was actually a shot I took when I was testing the settings on the camera. To edit this photo, I just changed the colour setting to sepia. However I faded it out so much that the colours were quite dull.

The second edit was taken in the bus station. This is another one of my favourite shots. I edited this by increasing the contrast so the light on the man's face stood out. I like how the light is highlighting the face, keeping the body in the shadows.

The third edit hasn't printed out as well as I had hoped. It is slightly out of focus. I did however increase the temperature to make the colours in the shot seem warmer.



To edit the last shot, I changed the colours to black and white, however I kept it so there was still some colouring in the shot to make it more interesting.

I really like this shot of the dog and how the light has captured the coat and floor, creating some shadow that makes the shots unique. To edit these shots I have increased the exposure and brightness of the shots to make them lighter and make the shadows more defined.

To edit the shot of the old man I used the cross process colouring effect. This has given the shot a unique look. The shot of the lady wearing the pink coat was taken on the main street in the town. I increased the brightness to enhance the sun on the lady's face and coat.

Bálint Rádóczy 'untitled', 2002

Bálint Rádóczy was a Hungarian artist who adopted the approach to visual arts based on the principles of nature. I have chosen to look at Rádóczy's work because I think it relates perfectly to my theme.

I have chose one specific photo he took in 2002 because the use of projection is something I want to work with in my project. This is a portrait shot and I particularly like it because the face is actually hidden due to the projection that is over it. This relates to my 'covert' theme and I like the choice of colour he has used to project.

He has chosen a green/blue and black spotted background which I think has actually worked really well. I like how the colour is quite vibrant and it makes the photo quite eye catching. I particularly like how the photo is quite distorted and it is unclear to know exactly what is going on. The fact that the face in the photo is unclear, adds a sense of mystery to it and makes the viewer wonder what the subject really looks like and why they are hidden in the first place.

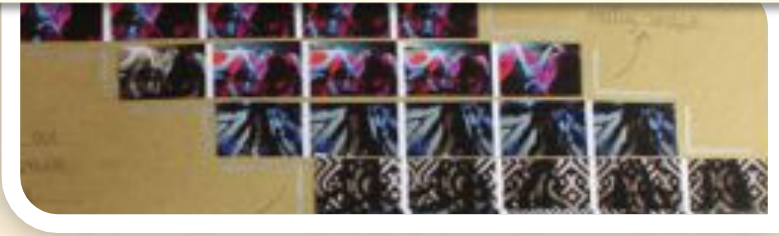
The photo is really interesting and unique to look at and I think it looks very obscured. This shot has been composed as the person is posing in the shot. It doesn't look natural and I think it has been done as part of a composed photo shoot. Rádóczy looks to have taken this shot from an angle slightly left of the face and he also looks to have used his ISO as the backdrop is really dark.

Projection is something that I have worked with in my coursework and I really liked the outcome of these photos. I think I will use Rádóczy's work as a starting point from which I can develop further as something I can experiment with in my exam.

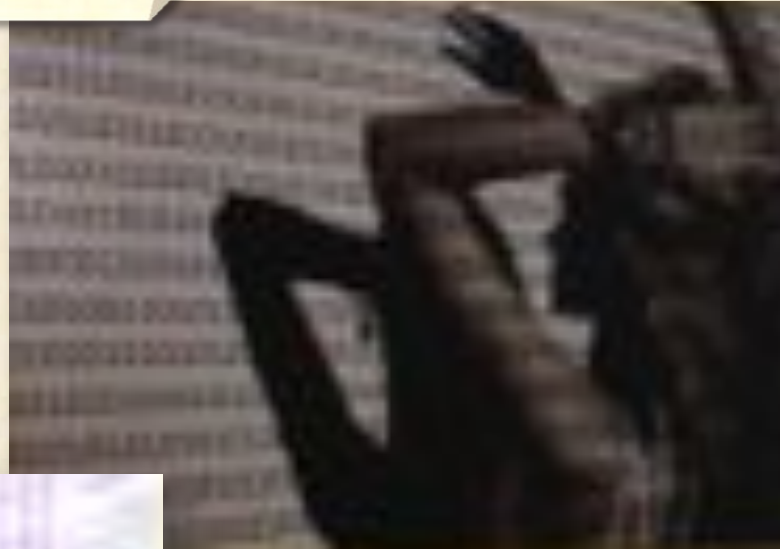


Sources: <http://www.balintradoczy.hu/>

Experimenting with media



I used a photo of lights to project. I really like how bold and vibrant the colours are. They make the shots really nice. I also used a cut-out to create shadows on the face. I like how the bold black patterns against the face look really striking.



I think this shot is really interesting. I like how I have captured the side of her face yet it still remains hidden. I also like the bold shadow that has been created by her arm. To edit this shot I increased the brightness and the shadows to make the lettering and the girl appear really dark.



This is my favourite shot from the entire shoot. I love the striking colours that I used and how very little editing was needed as the shot was already good without it. I did however increase the brightness, which also has made the colours seem more vibrant.

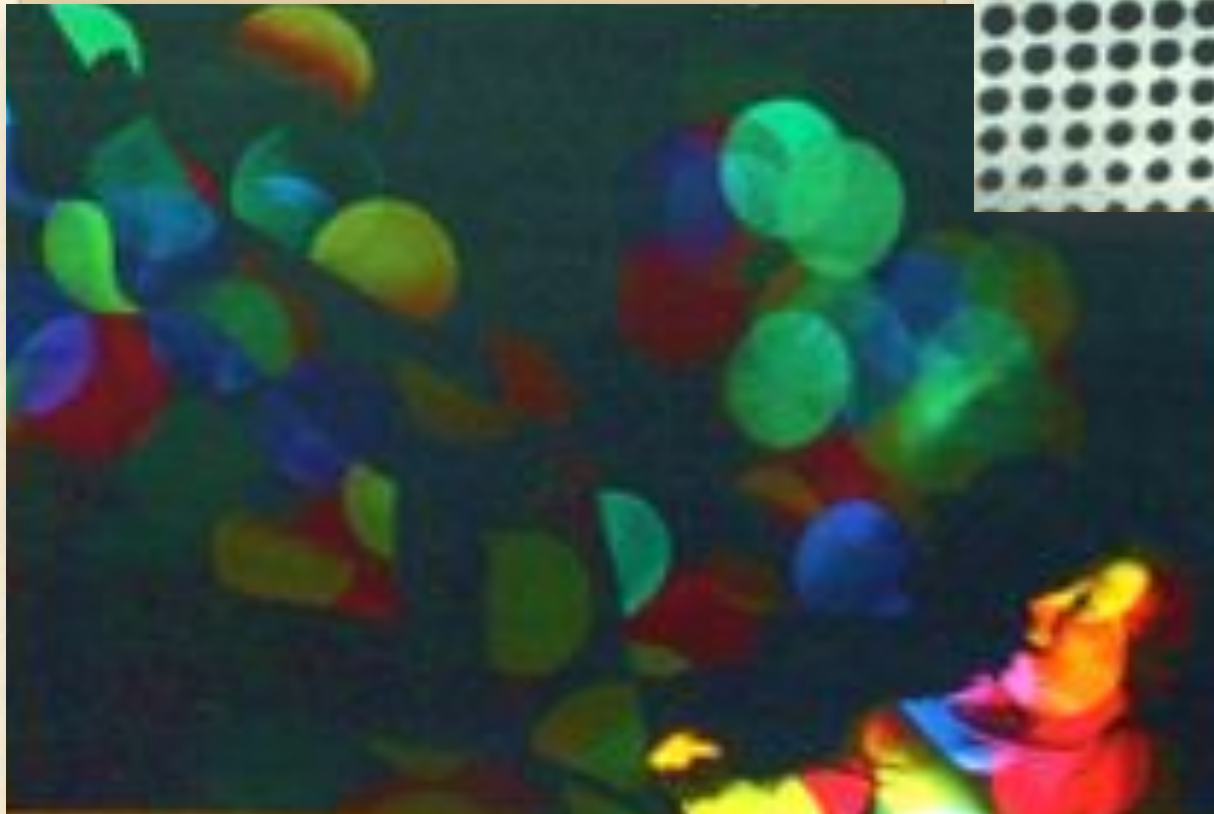


This shot really stood out for me. I chose it purely because of the facial expression and how the eye has caught the light. To edit this shot, I increased the contrast which has highlighted her eye. I have also increased the shadows which has made the tracing paper seem black rather than grey.

Edits

F-stop: f/5.6, Exposure time: 1/25 sec, ISO-1600

I took this shot when I stood up; looking down into the set with my model lying on the floor. I really like the unique positioning of the body and how her eyes have been captured by a light circle in the projection. To edit this image I have increased the brightness and have also increased the contrast, making the shot brighter and bolder to look at. I particularly like her facial expression and how the shot is natural, rather than composed. I also think that the shadow of her figure is shown in the background. This adds a more interesting element to the shot, as well as making it stand out.



F-stop: f/5.6, Exposure time: 1/20 sec, ISO-1600

I managed to capture this shot when the model was looking away from the camera. I think that this makes the shot less posed as it looks more natural. One thing I like about this particular shot is how her eyes have been caught in the light, as this is where your attention is automatically drawn to. I like the contrast between the light and dark in the photo and how striking it makes the shot. To edit this shot, I increased the contrast a small amount to make the light and the dark bolder. I think this has made the shot more eye catching. This shot was inspired by Balint Radoczy's work which I have studied.

Experimenting with media - cellophane



F-stop: f/5.6, Exposure time: 1/60 sec, ISO-400

This is one of my favourite pictures from the shoot. I really like the wide contrast in colours in this shot and I particularly like how the face is really dark, however the light has reflected onto the cellophane on the other side of the image. I think this contrast makes the image really unique and bold to look at. I think the use of colour in this image makes it more interesting and I think this has worked better than it would have if it was in black and white. To edit this image, I increased the exposure and the contrast to make a wide difference in the colours that are used. This image is one I will use for my finals.

F-stop: f/5.6, Exposure time: 1/100 sec, ISO-400

This is an image that I will use for one of my finals. I really like how dark this photo is however I also like how they are looking into the light. I think doing a side profile has made this particular image stand out from the rest. I like the wide contrast in this image as I was aiming to create a difference between light and dark areas in the image. I think the way the light has reflected the blue onto the face, makes this image really interesting to look at. I edited this by increasing the shadow's setting, make the face dark in comparison to the opposite side where it is really bright.



Experimenting with media



F-stop: f/5.6 Exposure time: 1/40 sec, ISO-400

This image is my favourite from the shoot. I really like the bright white streak in the middle of the shot that has been reflected onto the red cellophane by the light. I think this makes the shot really striking to look at as it is where your attention is automatically drawn to. I also think the way that the light has been caught in his eye makes this image really strong and effective. To edit this image, I lowered the brightness and increased the shadow setting. This has made the light reflection more vibrant and it has also created a wider contrast between dark and red areas compared to the light.





International Baccalaureate®
Baccalauréat International
Bachillerato Internacional

© International Baccalaureate Organization 2012

International Baccalaureate® | Baccalauréat International® | Bachillerato Internacional®