



AP 2-D Art and Design Portfolio

Eleni Vodantis

2020



Work 1

Sustained Investigation

Height: 11 inches

Width: 17 inches

Material(s): DSLR Canon T6 Rebel, tripod, Photoshop

Process(es): ISO: 200, Shutter speed: 30 seconds, Aperture: f18. Waited to capture activity.



Work 2

Sustained Investigation

Height: 11 inches

Width: 17 inches

Material(s): DSLR Canon T6 Rebel, Lightroom

Process(es): ISO: 400, Shutter speed: 1/500, Aperture: f14. Capture people in close proximity.



Work 3

Sustained Investigation

Height: 12 inches

Width: 18 inches

Material(s): DSLR Canon T6 Rebel, wisk, tripod, duck tape, steel wool, battery, sunglasses, gloves, Photoshop

Process(es): ISO: 200, Shutter speed: 30 seconds, Aperture: f16. Steel Wool on wisk spun in a circular motion.



Work 4

Sustained Investigation

Height: 10 inches

Width: 15 inches

Material(s): DSLR Canon T6 Rebel, Photoshop

Process(es): ISO: 100, Shutter speed: 1/200, Aperture: f9.



Work 5

Sustained Investigation

Height: 14 inches

Width: 14 inches

Material(s): DSLR Canon T6 Rebel, Photoshop

Process(es): ISO: 100, Shutter speed: 1/200, Aperture: f9.



Work 6

Sustained Investigation

Height: 11 inches

Width: 17 inches

Material(s): DSLR Canon T6 Rebel, Photoshop

Process(es): ISO: 100, Shutter speed: 1/250, Aperture: f10.



Work 7

Sustained Investigation

Height: 8 inches

Width: 12 inches

Material(s): DSLR Canon T6 Rebel, Photoshop, mask

Process(es): ISO: 100, Shutter speed: 1/1600, Aperture: f4. Used photoshop to edit color and monochrome.



Work 8

Sustained Investigation

Height: 9 inches

Width: 13 inches

Material(s): DSLR Canon T6 Rebel, Photoshop, mask

Process(es): ISO: 100, Shutter speed: 1/125, Aperture: f7.



Work 9

Sustained Investigation

Height: 12 inches

Width: 18 inches

Material(s): DSLR Canon T6 Rebel, sign

Process(es): ISO: 200, Shutter speed: 1/500, Aperture: f13.



Work 10

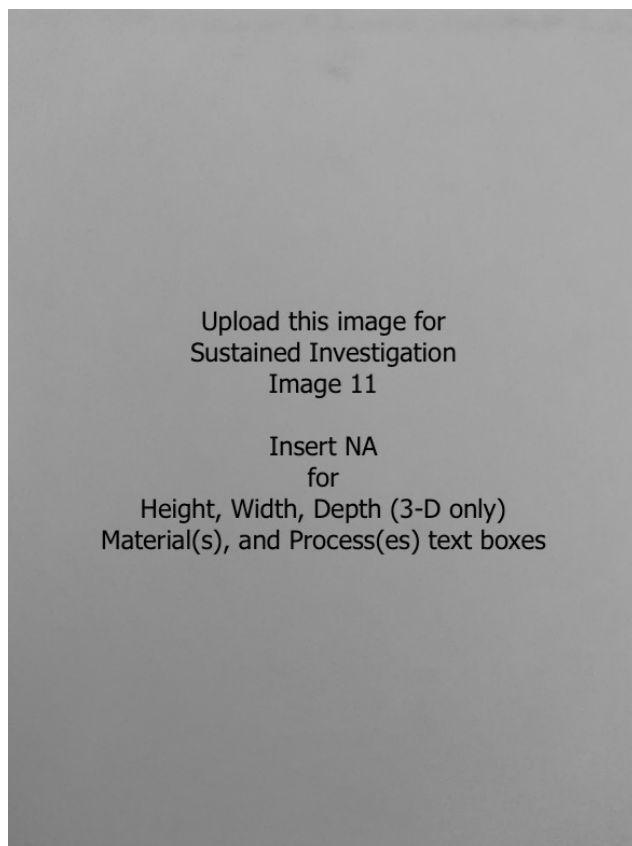
Sustained Investigation

Height: 12 inches

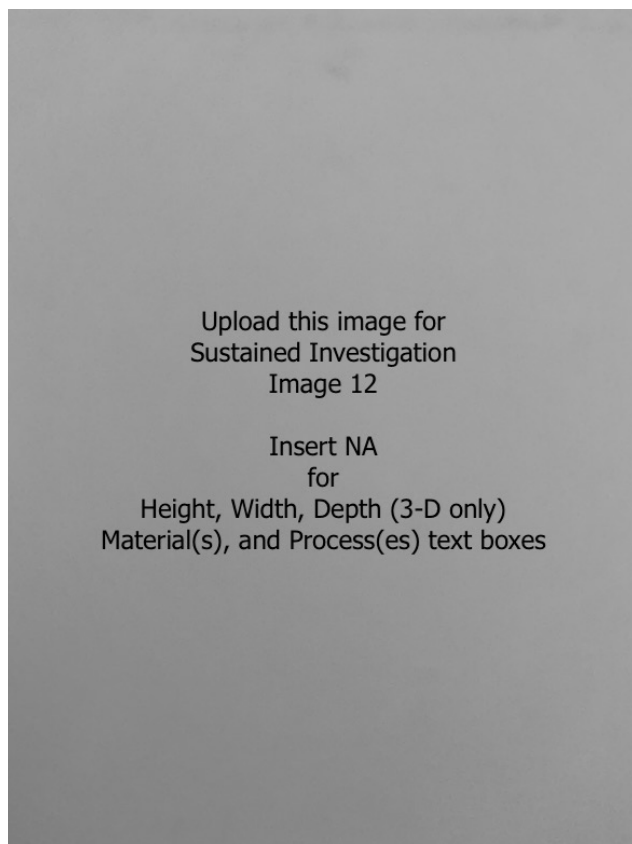
Width: 18 inches

Material(s): DSLR Canon T6 Rebel, Photoshop

Process(es): ISO: 100, Shutter speed: 1/640, Aperture: f8.

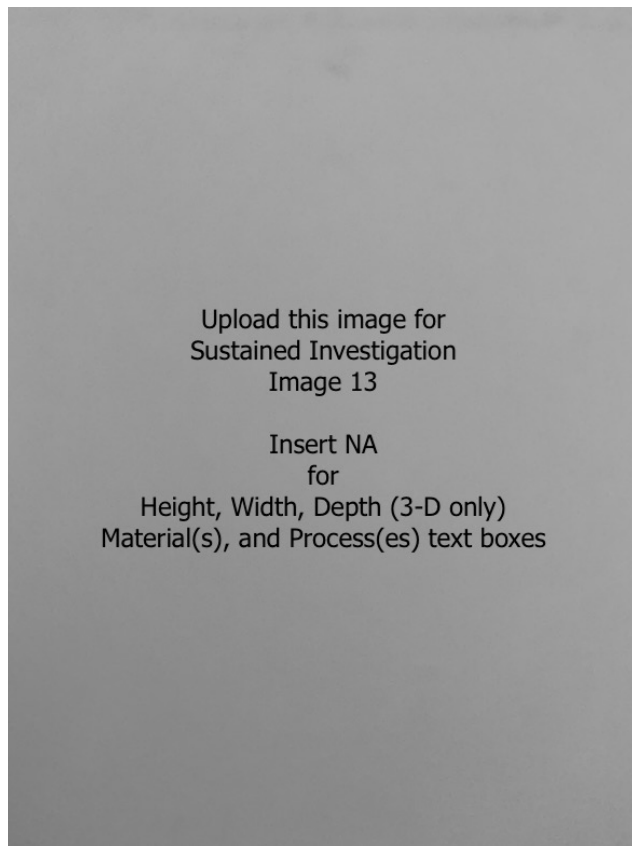
**Work 11**

Sustained Investigation

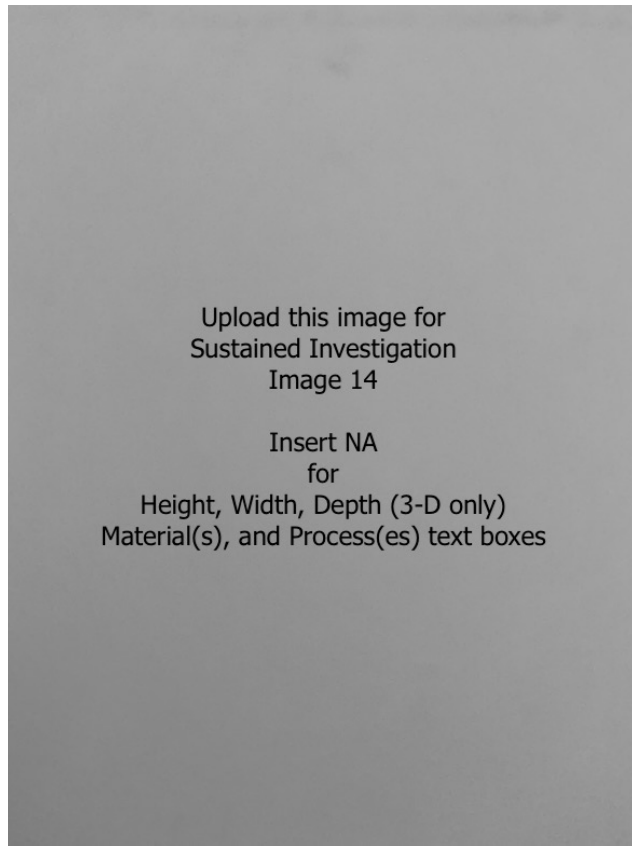
Height: N/A**Width:** N/A**Material(s):** N/A**Process(es):** N/A**Work 12**

Sustained Investigation

Height: N/A**Width:** N/A**Material(s):** N/A**Process(es):** N/A

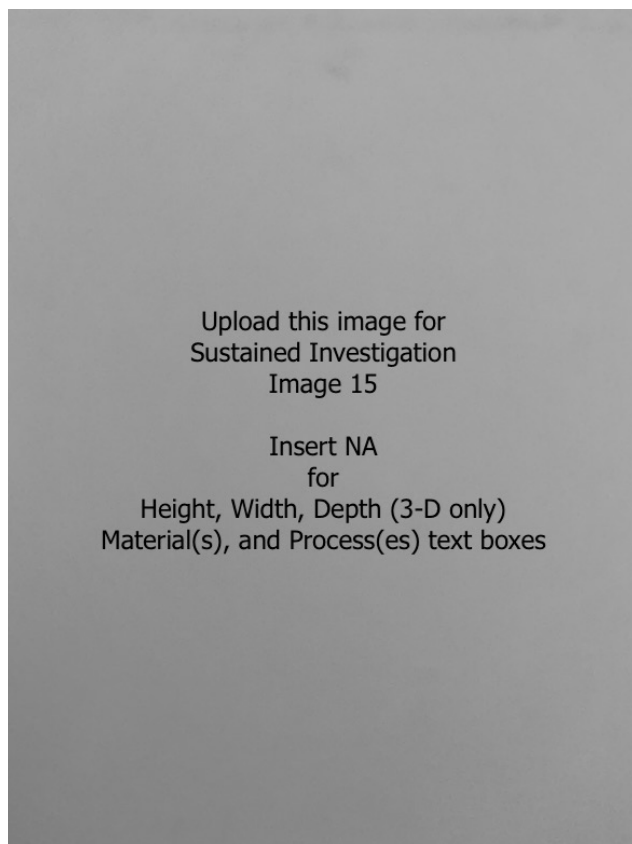
**Work 13**

Sustained Investigation

Height: N/A**Width:** N/A**Material(s):** N/A**Process(es):** N/A**Work 14**

Sustained Investigation

Height: N/A**Width:** N/A**Material(s):** N/A**Process(es):** N/A



Work 15

Sustained Investigation

Height: N/A

Width: N/A

Material(s): N/A

Process(es): N/A

Written Evidence

Sustained Investigation

Identify the question(s) or inquiry that guided your sustained investigation.

Describe how your sustained investigation shows evidence of practice, experimentation, and revision guided by your question(s) or inquiry.

Response:

My sustained investigation focuses on the way our lives have slowly changed due to the global pandemic: self-isolating ourselves in hopes to stop the virus. Before lockdown, I was snapping shots of people in nature. Slowly my images turned into people isolated in nature. This perfectly morphed into what we are currently facing with social distancing. Images 1 & 2 are before the pandemic: the 101 freeway with hundreds of cars passing by and a crowded beach in La Jolla, CA to show our disregard for being close to strangers. Slowly we have had to turn to self-isolation. My bulb-exposure shows a circle of light surrounding the subject to represent the bubble that we have put ourselves in. Once COVID hit, beaches were closed, but it took some time for people to follow these guidelines. The black and white images represent the worst of the quarantine when the earth became desolate and beaches ran empty. Masks became a part of our daily lives. As color returns to the photos we can slowly see things improve as people are grateful to be alive, even if they are missing their graduation. The last image shows the beaches packed once again as people seem to disregard the stay at home order.



Work 1

Selected Works

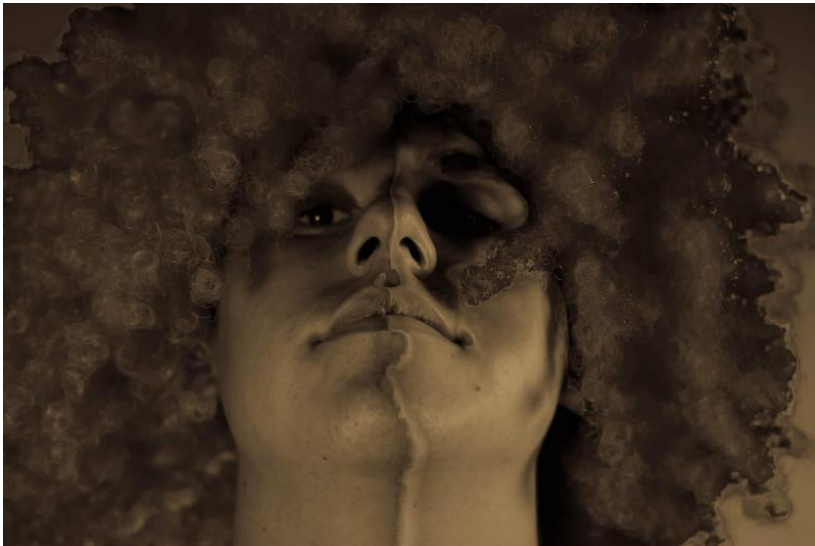
Height: 12 inches

Width: 18 inches

Ideas(s): Humans are obsolete compared to the world that we are like a bug under nature's umbrella.

Material(s): DSLR Canon T6 Rebel, whisk, tripod, duck tape, steel wool, battery, sunglasses, gloves, photoshop

Process(es): ISO: 200, Shutter speed: 30 seconds, Aperture: f16. Steel Wool on whisk spun in a circular motion.



Work 2

Selected Works

Height: 12 inches

Width: 18 inches

Ideas(s): Lightness and Darkness are contrasted through reality on the left and fantasy on the right.

Material(s): DSLR Canon T6 Rebel, Wig, Photoshop, Lightroom

Process(es): Adjusted the contrast and exposure to create a division of lightness and darkness along the center.



Work 3

Selected Works

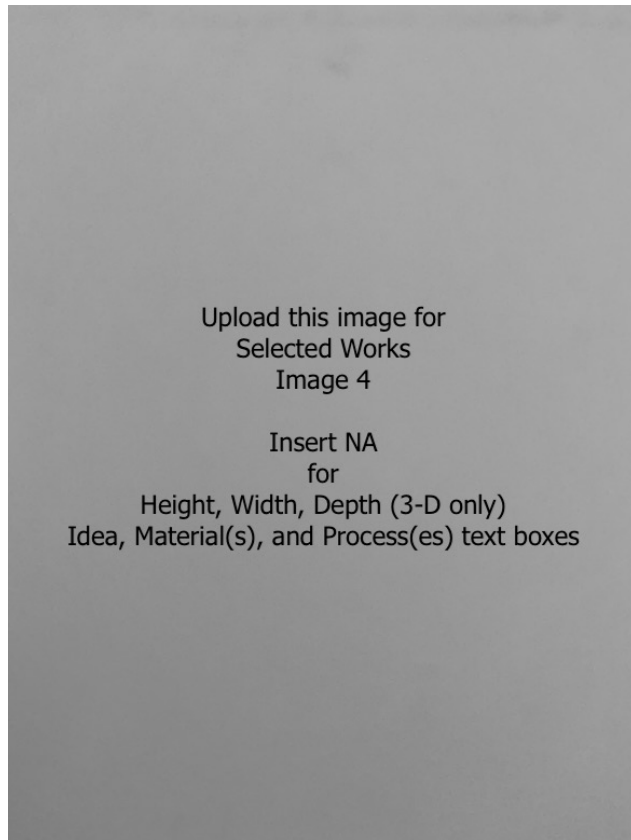
Height: 12 inches

Width: 18 inches

Ideas(s): Nature is so beautiful and powerful. Humans are insignificant and small compared to nature.

Material(s): DSLR Canon T6 Rebel, Lightroom

Process(es): Enhanced blue water and clarity in Lightroom. Increased exposure and contrast on rocks.



Work 4

Selected Works

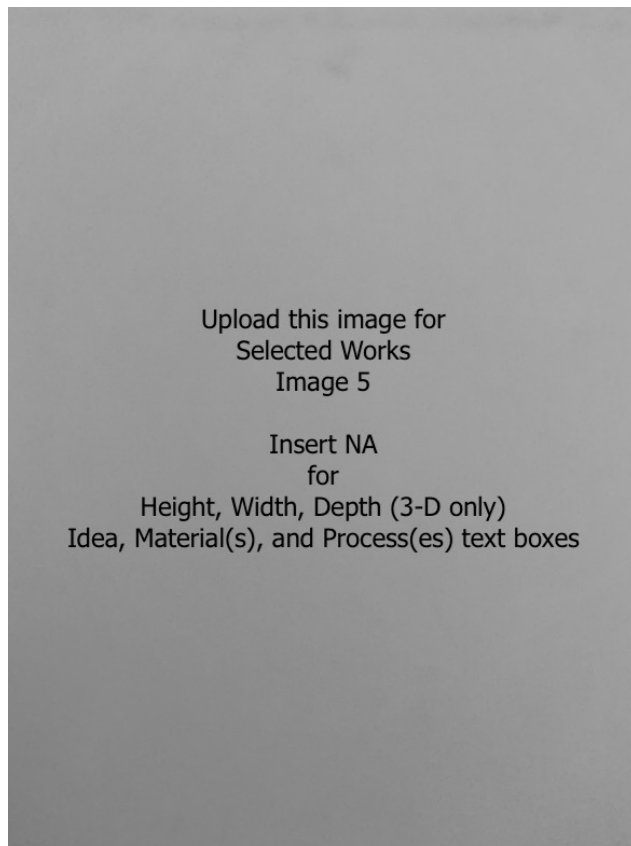
Height: N/A

Width: N/A

Ideas(s): N/A

Material(s): N/A

Process(es): N/A



Work 5

Selected Works

Height: N/A

Width: N/A

Ideas(s): N/A

Material(s): N/A

Process(es): N/A