



AP 2-D Art and Design Portfolio

Lars Haavaldsen

2020



Work 1

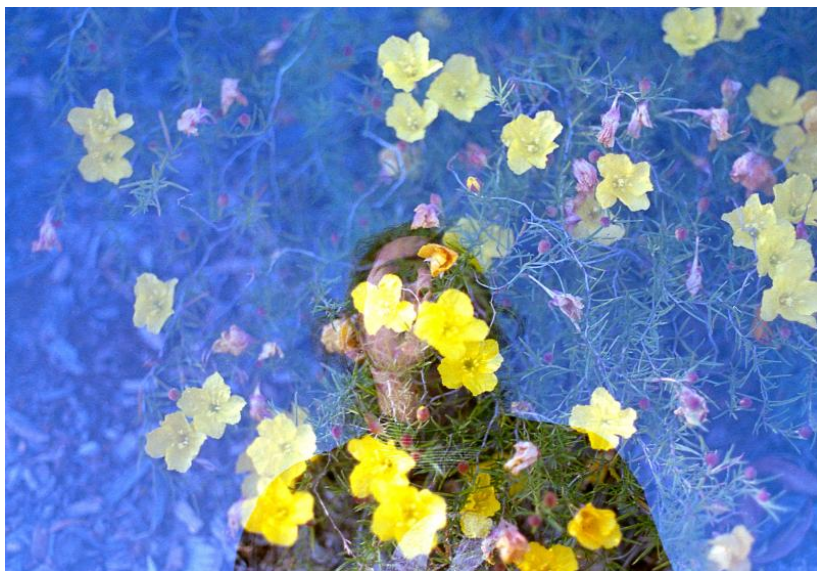
Sustained Investigation

Height: 6.8 inches

Width: 11 inches

Material(s): Kodak Gold 200 film,
Minolta SRT Super Camera

Process(es): Reversed film in
canister to create red scale effect,
exposed the negative multiple times



Work 2

Sustained Investigation

Height: 7.62 inches

Width: 11 inches

Material(s): Fujifilm Superia 400,
Minolta X7-A Camera

Process(es): Exposed the negative
multiple times



Work 3

Sustained Investigation

Height: 6.9 inches

Width: 11 inches

Material(s): Kodak Portra 800,
Minolta XE-7 Camera, studio
lights/gels

Process(es): Exposed the negative
twice, once on subject, and the
second time on a metal sheet



Work 4

Sustained Investigation

Height: 6.9 inches

Width: 11 inches

Material(s): Kodak Portra 800,
Minolta XE-7 Camera, studio
lights/gels

Process(es): Exposed the negative
twice, once on subject, and the
second time on a metal sheet



Work 5

Sustained Investigation

Height: 8.48 inches

Width: 11 inches

Material(s): Kodak Tri-X 400, Minolta XE-7, and darkroom

Process(es): Printed 2 different negatives onto one sheet of paper, sepia toned



Work 6

Sustained Investigation

Height: 11 inches

Width: 7.4 inches

Material(s): Ilford HP5, photoshop

Process(es): Used 2 negatives that were damaged in the development process and overlayed them onto each other



Work 7

Sustained Investigation

Height: 7.35 inches

Width: 11 inches

Material(s): Digital camera, Photoshop

Process(es): Used flash to capture snowflakes falling in the air, and used Photoshop to increase the details



Work 8

Sustained Investigation

Height: 7.33 inches

Width: 11 inches

Material(s): Kodak Portra 800, Minolta XE-7 Camera, studio lights/gels

Process(es): Used a larger aperture to blur the subject in the background



Work 9

Sustained Investigation

Height: 7.33 inches

Width: 11 inches

Material(s): Digital Camera, Film photo in the background, Macro Lens

Process(es): Used a sheet of glass, and a phone in background, sprayed the glass with water



Work 10

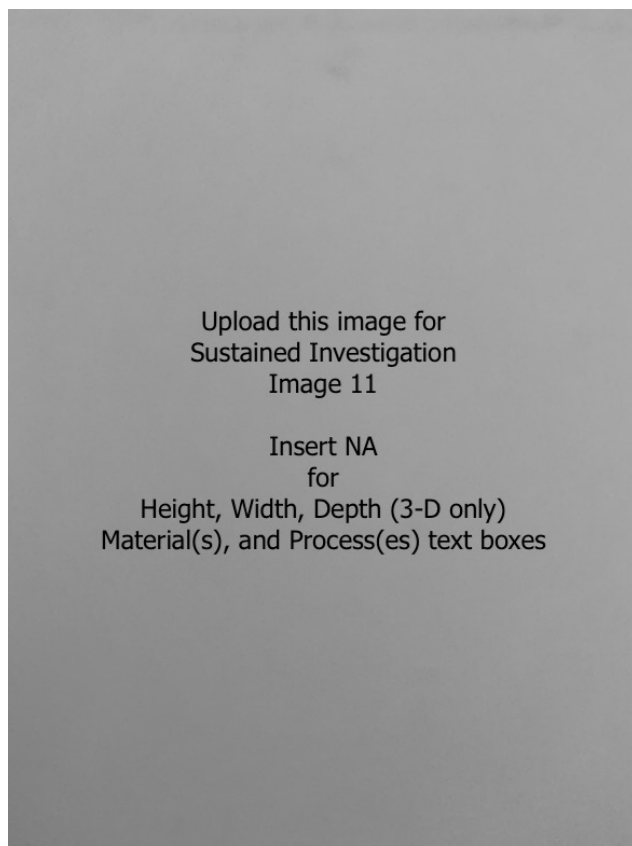
Sustained Investigation

Height: 7.33 inches

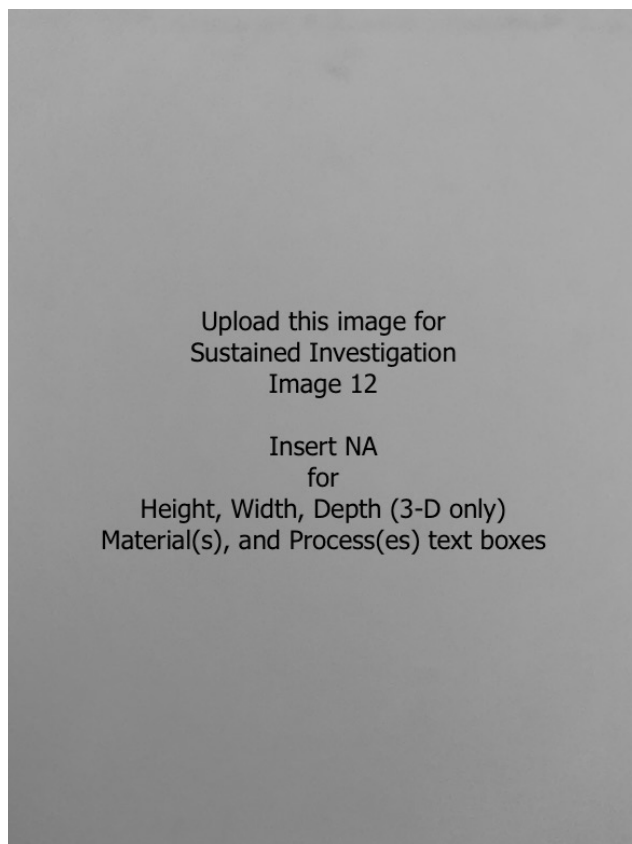
Width: 11 inches

Material(s): Digital Camera, Film photo in the background, Macro Lens

Process(es): Used a sheet of glass, and a phone in background, sprayed the glass with water

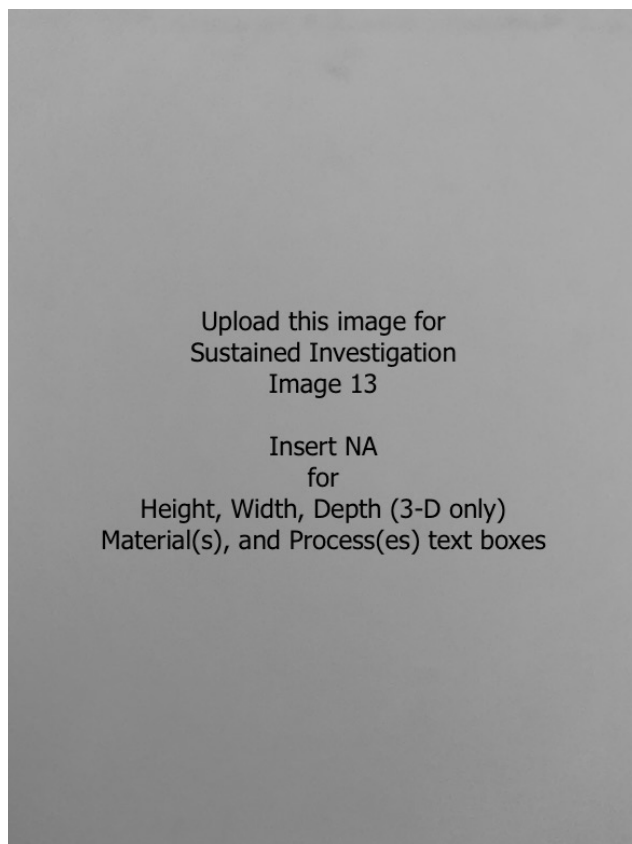
**Work 11**

Sustained Investigation

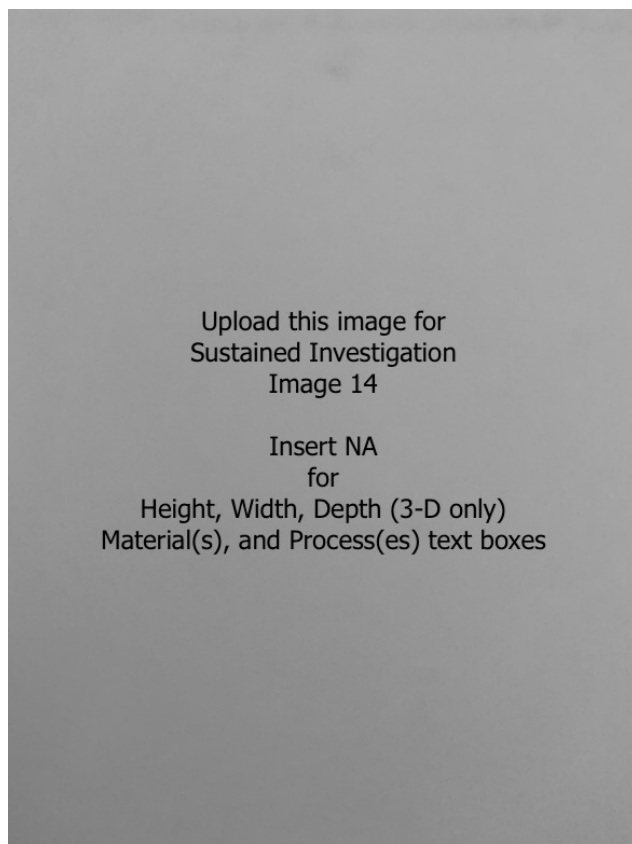
Height: NA**Width:** NA**Material(s):** NA**Process(es):** NA**Work 12**

Sustained Investigation

Height: NA**Width:** NA**Material(s):** NA**Process(es):** NA

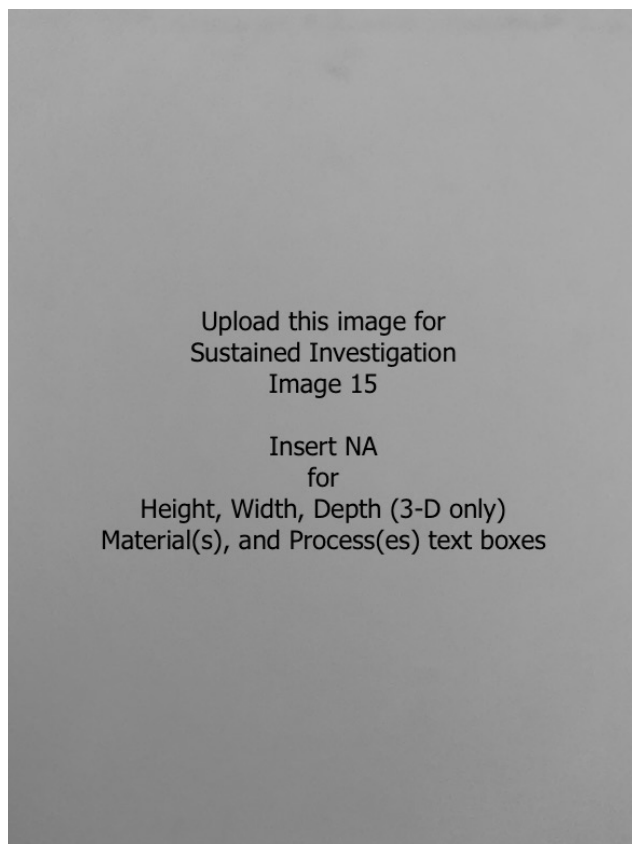
**Work 13**

Sustained Investigation

Height: NA**Width:** NA**Material(s):** NA**Process(es):** NA**Work 14**

Sustained Investigation

Height: NA**Width:** NA**Material(s):** NA**Process(es):** NA



Work 15

Sustained Investigation

Height: NA

Width: NA

Material(s): NA

Process(es): NA

Written Evidence

Sustained Investigation

Identify the question(s) or inquiry that guided your sustained investigation.

Describe how your sustained investigation shows evidence of practice, experimentation, and revision guided by your question(s) or inquiry.

Response:

My goal with my Sustained Investigation was to ask the question, who are we? In the modern social media age we present a one dimensional view of who we are online. With my art, I've attempted to add a layer between the viewer and the subject, complicating the subject to convey the idea that we as humans are not perfect, and in many ways confusing messes, contrary to what we show on social media. I've chosen to create many of my images using film because, like us humans, film has many layers, and even though the many layers can easily summed up into one final image, each layer is equally important to creating the final image.

In images 1-6, I've used techniques for multiple exposures to add a layer between the viewer and the subject, this layer adds details to the subject that would not be present in a normal portrait, and adds dimensions to who the subject is. Images 7-10 use a physical barrier between the subject and the viewer to obscure the subject, this barrier allows my subject to transcend what their physical appearance is, and attempt to convey something about them using the details created by the barrier.



Work 1

Selected Works

Height: 11 inches

Width: 7 inches

Ideas(s): Serious, my goal was to take a portrait that empowered my subject

Material(s): Kodak Gold 200, Minolta XE-7 Camera

Process(es): Overexposed the film by one stop



Work 2

Selected Works

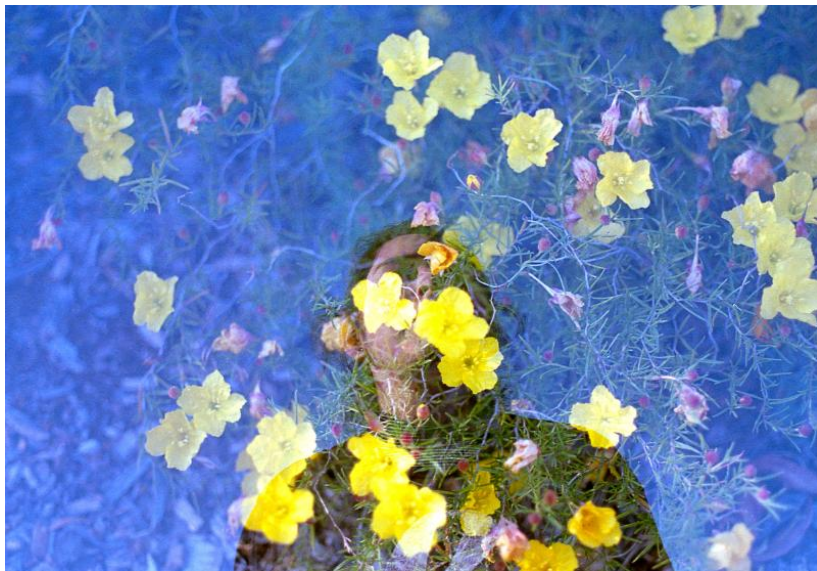
Height: 6.8 inches

Width: 11 inches

Ideas(s): Imperfection, distorted beauty, serious

Material(s): Kodak Gold 200 film, Minolta SRT Super Camera

Process(es): Reversed film in canister to create red scale effect, exposed the negative multiple times



Work 3

Selected Works

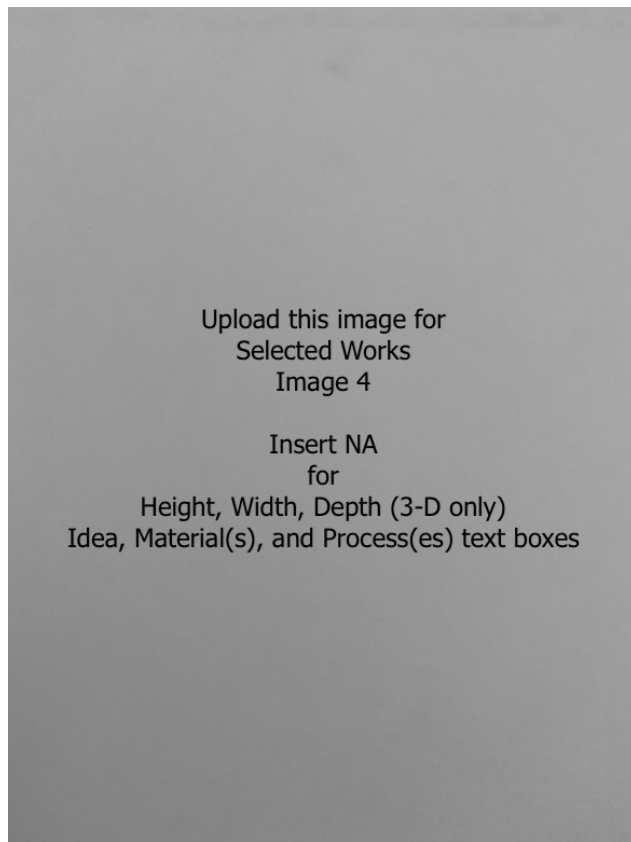
Height: 7.62 inches

Width: 11 inches

Ideas(s): Distorted reality, lonely, subject appears small surrounded by so many flowers and the sky

Material(s): Fujifilm Superia 400, Minolta X7-A Camera

Process(es): Exposed the negative multiple times



Work 4

Selected Works

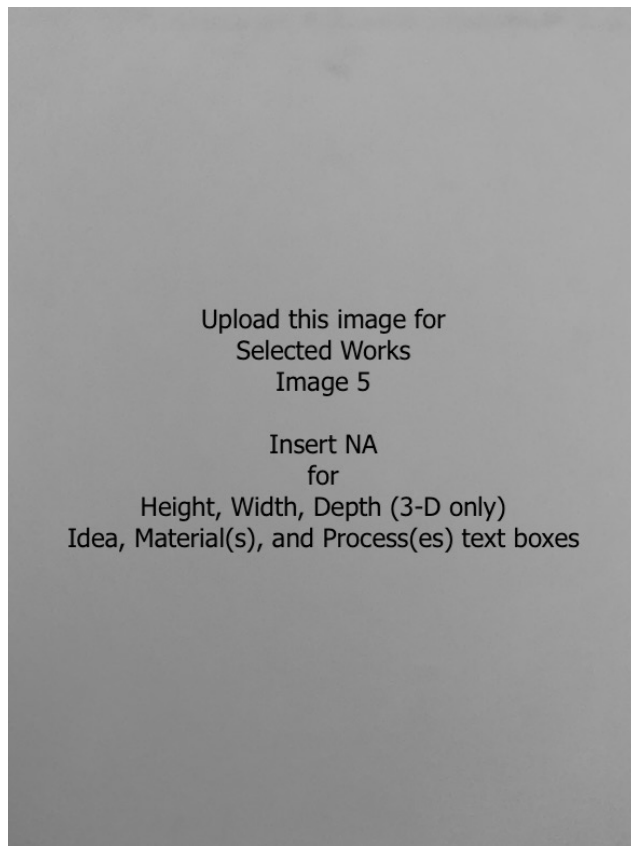
Height: NA

Width: NA

Ideas(s): NA

Material(s): NA

Process(es): NA



Upload this image for
Selected Works
Image 5

Insert NA
for
Height, Width, Depth (3-D only)
Idea, Material(s), and Process(es) text boxes

Work 5

Selected Works

Height: NA

Width: NA

Idea(s): NA

Material(s): NA

Process(es): NA