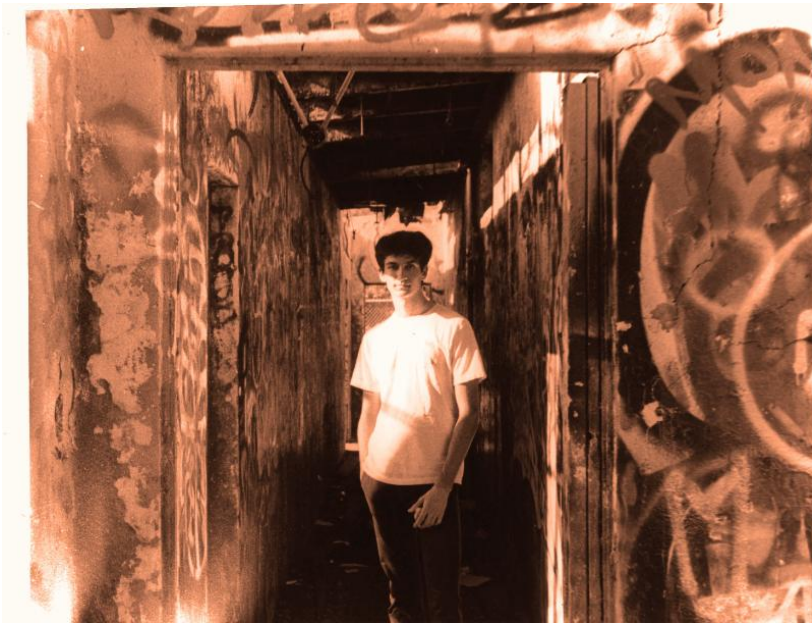


# **AP 2-D Art and Design Portfolio**

Vivek Kanchi

2020



## Work 1

Sustained Investigation

**Height:** 11 inches

**Width:** 14 inches

**Material(s):** Film  
Developer, Darkroom  
chemicals and basic  
materials, Adobe  
Photoshop

**Process(es):** Developed  
film, used darkroom to  
project image on paper,  
then scanned image to  
edit on Photoshop



## Work 2

Sustained Investigation

**Height:** 11 inches

**Width:** 14 inches

**Material(s):** Film  
Developer, Darkroom  
chemicals and basic  
materials, Adobe  
Photoshop

**Process(es):** Developed  
film, used darkroom to  
project image on paper,  
then scanned image to  
edit on Photoshop



## Work 3

Sustained Investigation

**Height:** 9 inches

**Width:** 12 inches

**Material(s):** Film  
Developer, Darkroom  
chemicals and basic  
materials, Adobe  
Photoshop

**Process(es):** Developed  
film, used darkroom to  
project image on paper,  
then scanned image to  
edit on Photoshop



## Work 4

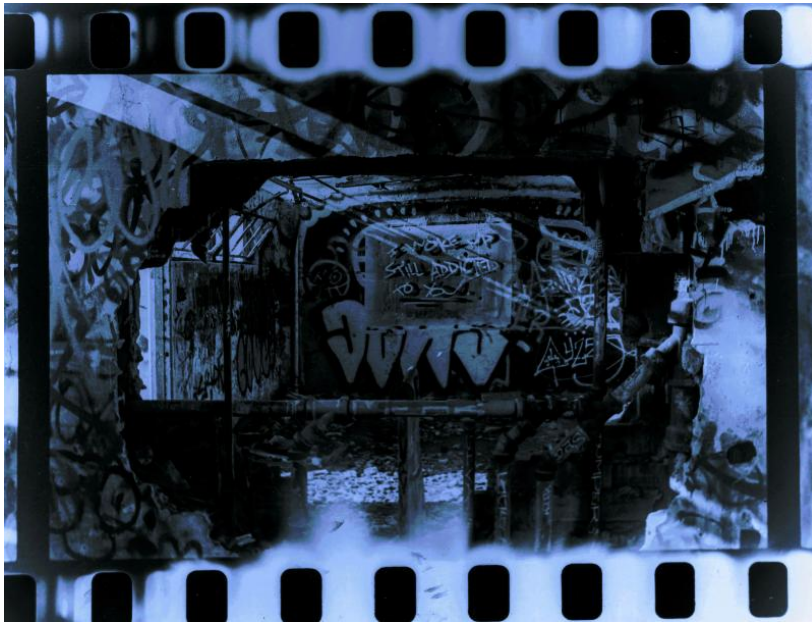
Sustained Investigation

**Height:** 9 inches

**Width:** 12 inches

**Material(s):** Film  
Developer, Darkroom  
chemicals and basic  
materials, Adobe  
Photoshop

**Process(es):** Developed  
film, used darkroom to  
project image on paper,  
then scanned image to  
edit on Photoshop



## Work 5

Sustained Investigation

**Height:** 9 inches

**Width:** 12 inches

**Material(s):** Film  
Developer, Darkroom  
chemicals and basic  
materials, Adobe  
Photoshop

**Process(es):** Developed  
film, used larger negative  
carrier to include the  
border, scanned image for  
Photoshop



## Work 6

Sustained Investigation

**Height:** 9 inches

**Width:** 12 inches

**Material(s):** Canon Rebel  
5i DSLR camera

**Process(es):** Used flash,  
3.625 aperture, 1/60  
exposure time, 1600 ISO  
speed, and F-number f/3.5



## Work 7

Sustained Investigation

**Height:** 9 inches

**Width:** 12 inches

**Material(s):** Canon Rebel 5i DSLR camera

**Process(es):** Used flash, 4.0 aperture, 1/60 exposure time, 1600 ISO speed, and F-number f/3.5



## Work 8

Sustained Investigation

**Height:** 9 inches

**Width:** 12 inches

**Material(s):** Canon Rebel 5i DSLR camera

**Process(es):** Used flash, 3.625 aperture value, 1/60 exposure time, 1600 ISO speed, and F-number f/3.5



## Work 9

Sustained Investigation

**Height:** 9 inches

**Width:** 12 inches

**Material(s):** Canon Rebel 5i DSLR camera

**Process(es):** Used flash, 3.625 aperture, 1/60 exposure time, 1600 ISO speed, and F-number f/3.5



## Work 10

Sustained Investigation

**Height:** 9 inches

**Width:** 12 inches

**Material(s):** Canon Rebel 5i DSLR camera

**Process(es):** Used flash, 3.625 aperture, 1/60 exposure time, 1600 ISO speed, and F-number f/3.5

Upload this image for  
Sustained Investigation  
Image 11

Insert NA  
for  
Height, Width, Depth (3-D only)  
Material(s), and Process(es) text boxes

## **Work 11**

Sustained Investigation

**Height:** N/A

**Width:** N/A

**Material(s):** N/A

**Process(es):** N/A

# Work 12

Sustained Investigation

**Height:** N/A

**Width:** N/A

**Material(s):** N/A

**Process(es):** N/A

Upload this image for  
Sustained Investigation  
Image 12

Insert NA  
for  
Height, Width, Depth (3-D only)  
Material(s), and Process(es) text boxes

Upload this image for  
Sustained Investigation  
Image 13

Insert NA  
for  
Height, Width, Depth (3-D only)  
Material(s), and Process(es) text boxes

## Work 13

Sustained Investigation

**Height:** N/A

**Width:** N/A

**Material(s):** N/A

**Process(es):** N/A

## Work 14

Sustained Investigation

**Height:** N/A

**Width:** N/A

**Material(s):** N/A

**Process(es):** N/A

Upload this image for  
Sustained Investigation  
Image 14

Insert NA  
for  
Height, Width, Depth (3-D only)  
Material(s), and Process(es) text boxes

Upload this image for  
Sustained Investigation  
Image 15

Insert NA  
for  
Height, Width, Depth (3-D only)  
Material(s), and Process(es) text boxes

## **Work 15**

Sustained Investigation

**Height:** N/A

**Width:** N/A

**Material(s):** N/A

**Process(es):** N/A

# Written Evidence

Sustained Investigation

**Identify the question(s) or inquiry that guided your sustained investigation.**

**Describe how your sustained investigation shows evidence of practice, experimentation, and revision guided by your question(s) or inquiry.**

**Response:**

1. The concentration for my sustained investigation is the idea of how urban architecture can often be marred by street art. I wanted to connect how society has been tarnished by technology and social media in a similar way.
2. In the first 4 images of my concentration, one can identify an individual amongst the graffiti art. The subjects are all surrounded by other people's biased comments towards a topic on the walls. In a world that is driven by social media, we are living under the influence of others' opinion-driven social media posts. Since art is subject to the perceiver, all of the graffiti will be interpreted differently from one another. This is why each of the first four pictures has a different subject. Moving on to images 6 to 8, I am now venturing out to see for myself whether this influence is real or not. As I climb up, I start to see that this influence is becoming more and more real. Once I am overlooking society in images 9 and 10, I have come to the conclusion that society is indeed manipulated by the opinions others have, whether they are accurate or not. The orange hues in the sky in the image 10 signify that society could be destroyed via technology.



# Work 1

Selected Works

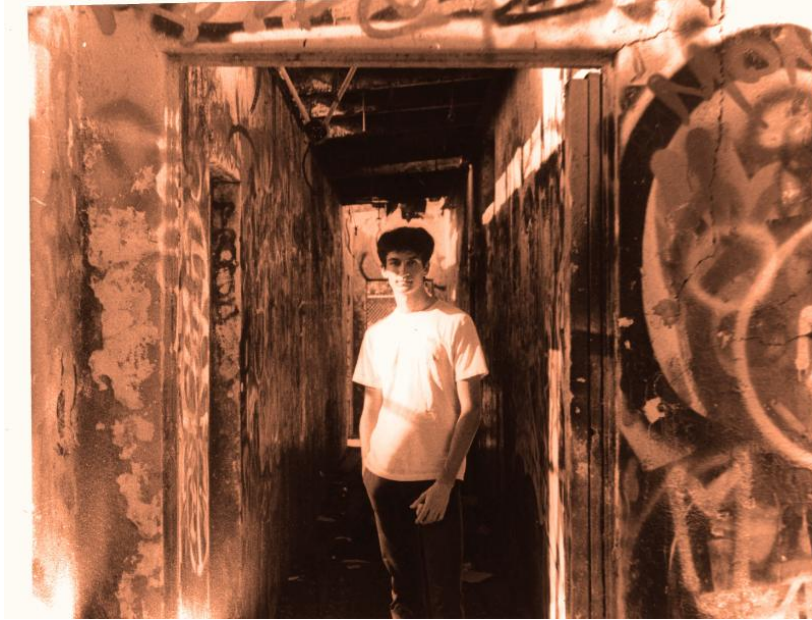
**Height:** 11 inches

**Width:** 14 inches

**Ideas(s):** Modern society is surrounded by chaos just as the subject is surrounded by graffiti in this image

**Material(s):** Film  
Developer, Darkroom  
chemicals and basic  
materials, Adobe  
Photoshop

**Process(es):** Developed  
film, used darkroom to  
project image on paper,  
then scanned image to  
edit on Photoshop



## Work 2

Selected Works

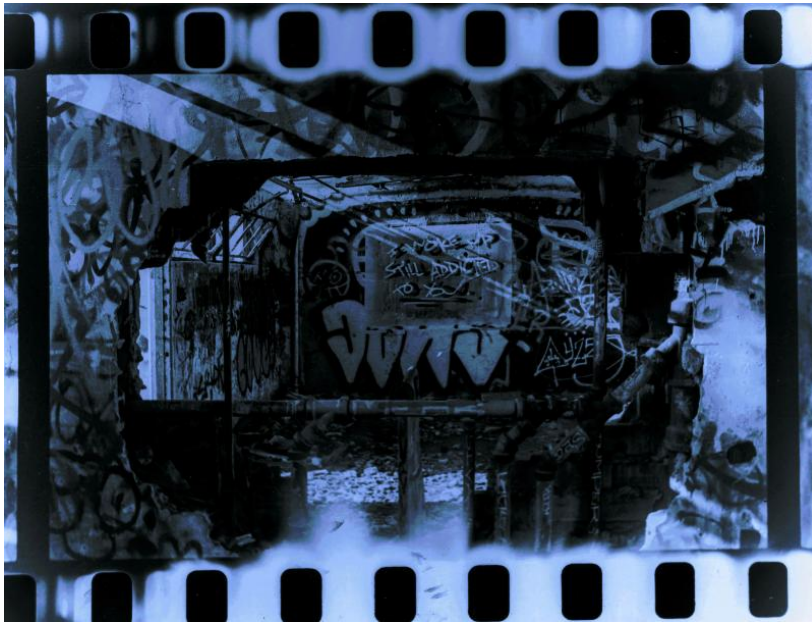
**Height:** 11 inches

**Width:** 14 inches

**Ideas(s):** Image portrays depth. Internet is infinite just as there is much art beyond the individual.

**Material(s):** Film  
Developer, Darkroom  
chemicals and basic  
materials, Adobe  
Photoshop

**Process(es):** Developed  
film, used darkroom to  
project image on paper,  
then scanned image to  
edit on Photoshop



## Work 3

Selected Works

**Height:** 9 inches

**Width:** 12 inches

**Ideas(s):** Damaged film is the negative effect of internet. Phrase on the back wall symbolizes human response.

**Material(s):** Film Developer, Darkroom chemicals and basic materials, Adobe Photoshop

**Process(es):** Developed film, used larger negative carrier to include the border, scanned image for Photoshop

## Work 4

Selected Works

**Height:** N/A

**Width:** N/A

**Ideas(s):** N/A

**Material(s):** N/A

**Process(es):** N/A

Upload this image for  
Selected Works  
Image 4

Insert NA  
for  
Height, Width, Depth (3-D only)  
Idea, Material(s), and Process(es) text boxes

Upload this image for  
Selected Works  
Image 5

Insert NA  
for  
Height, Width, Depth (3-D only)  
Idea, Material(s), and Process(es) text boxes

## Work 5

Selected Works

**Height:** N/A

**Width:** N/A

**Ideas(s):** N/A

**Material(s):** N/A

**Process(es):** N/A