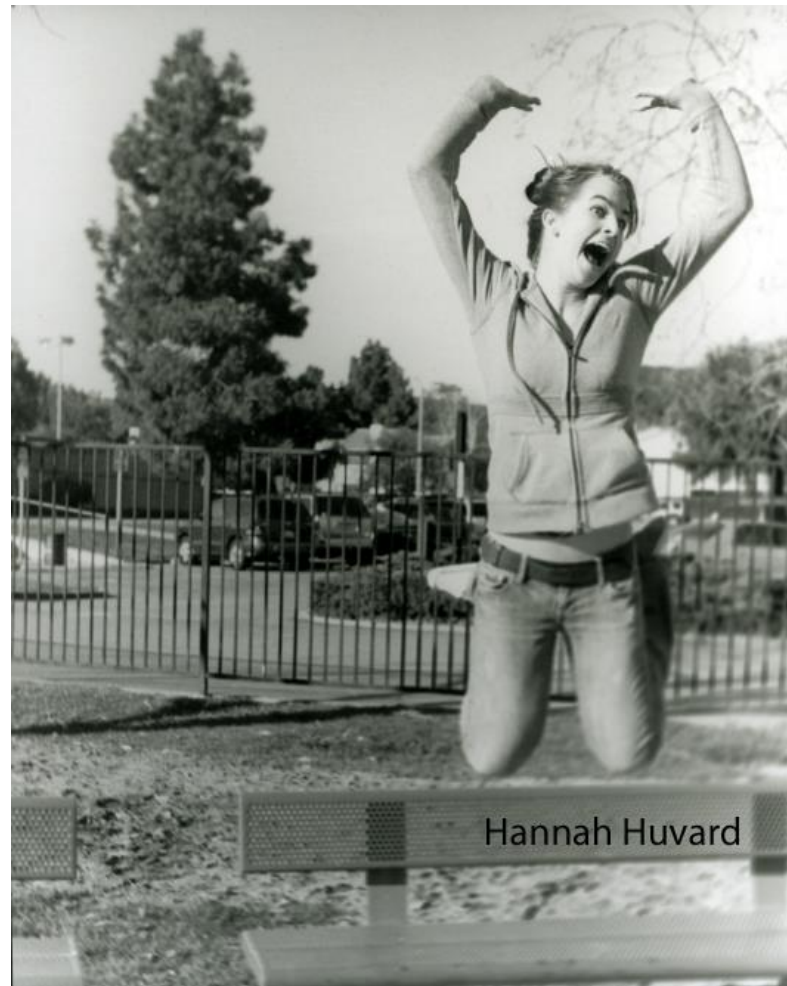


Freeze Motion



Shutter Speed



Shutter Speed to use

1/500 sec. to 1/2000 sec.

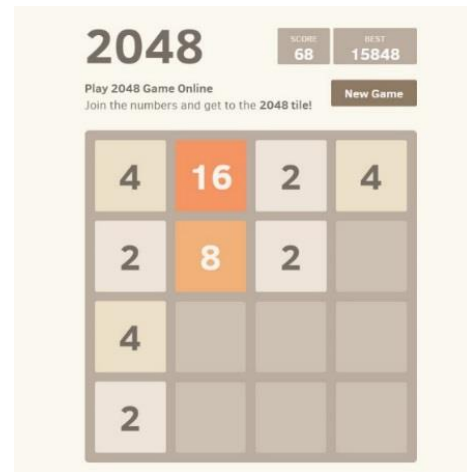
500-2000

As displayed on DSLRs and Film cameras

Doubling Comparison for Shutter Speeds

- Doubling Sequence

- 1
- 2
- 4
- 8
- 16
- 32
- 64
- 128
- 256
- 512
- 1024
- **2048**



- Camera Shutter Speeds

- 1
- 2
- 4
- 8
- 15
- 30
- 60
- 125
- 250
- 500
- 1000
- **2000**

Consider your background and
your use of
SPACE

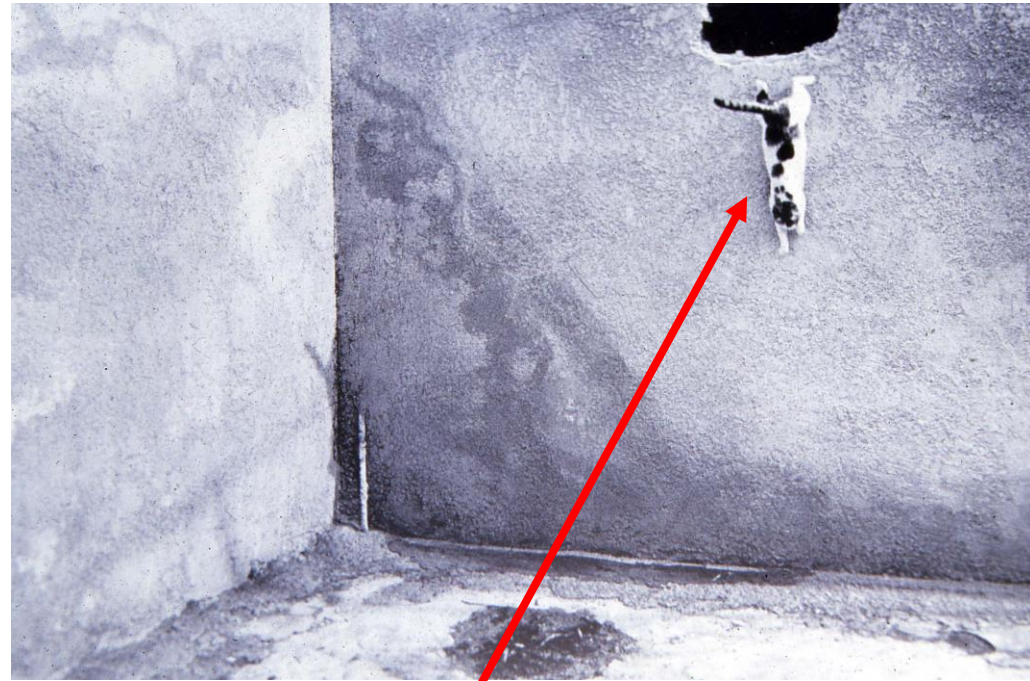


Photo on left is a great subject, but has major
merger issues

Photo above is composed with much better use
of **space**

Pay close attention to background and your use
of **POSITIVE SPACE** and **NEGATIVE SPACE**





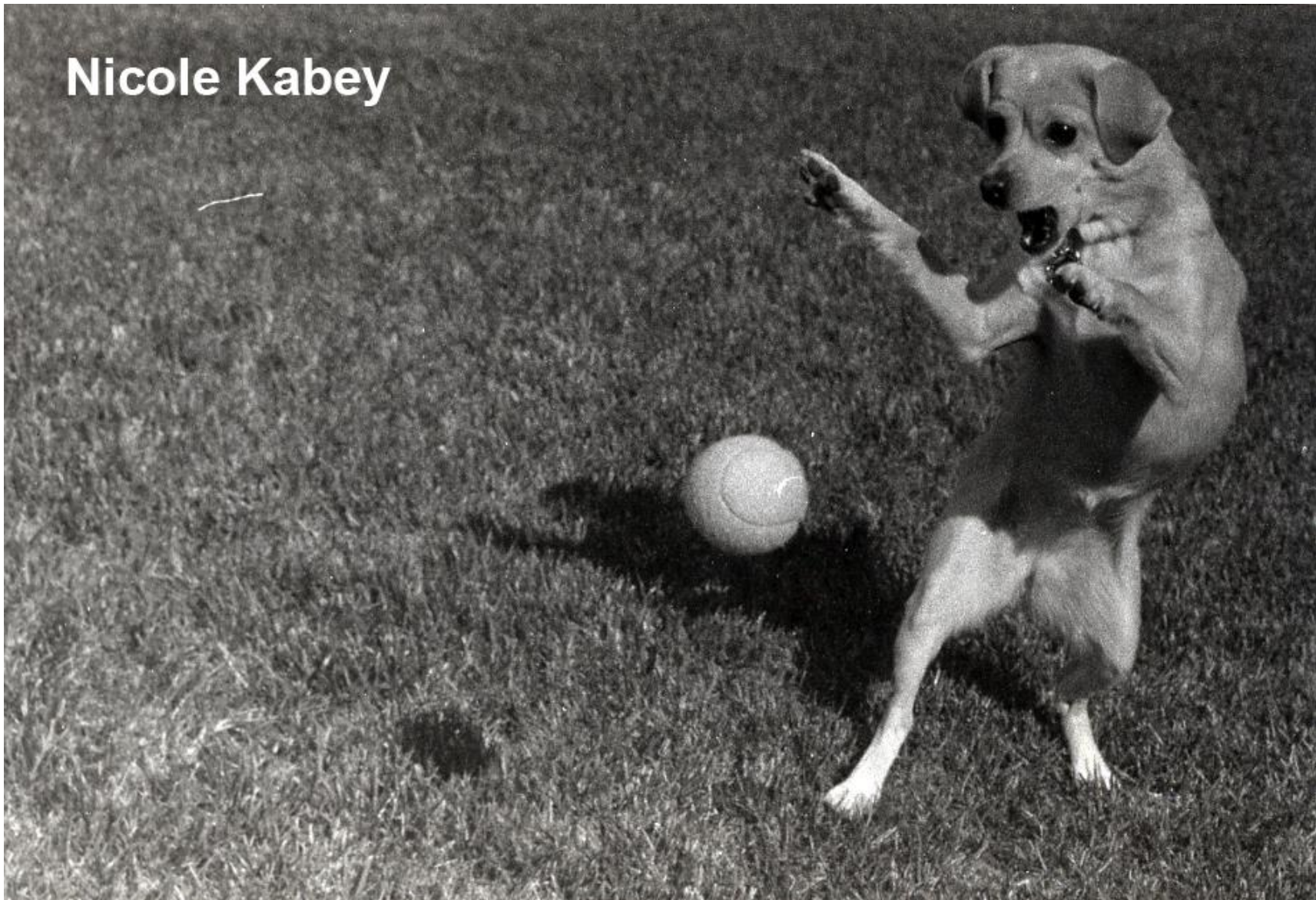


Haley Levens



Haley Levens

Nicole Kabey

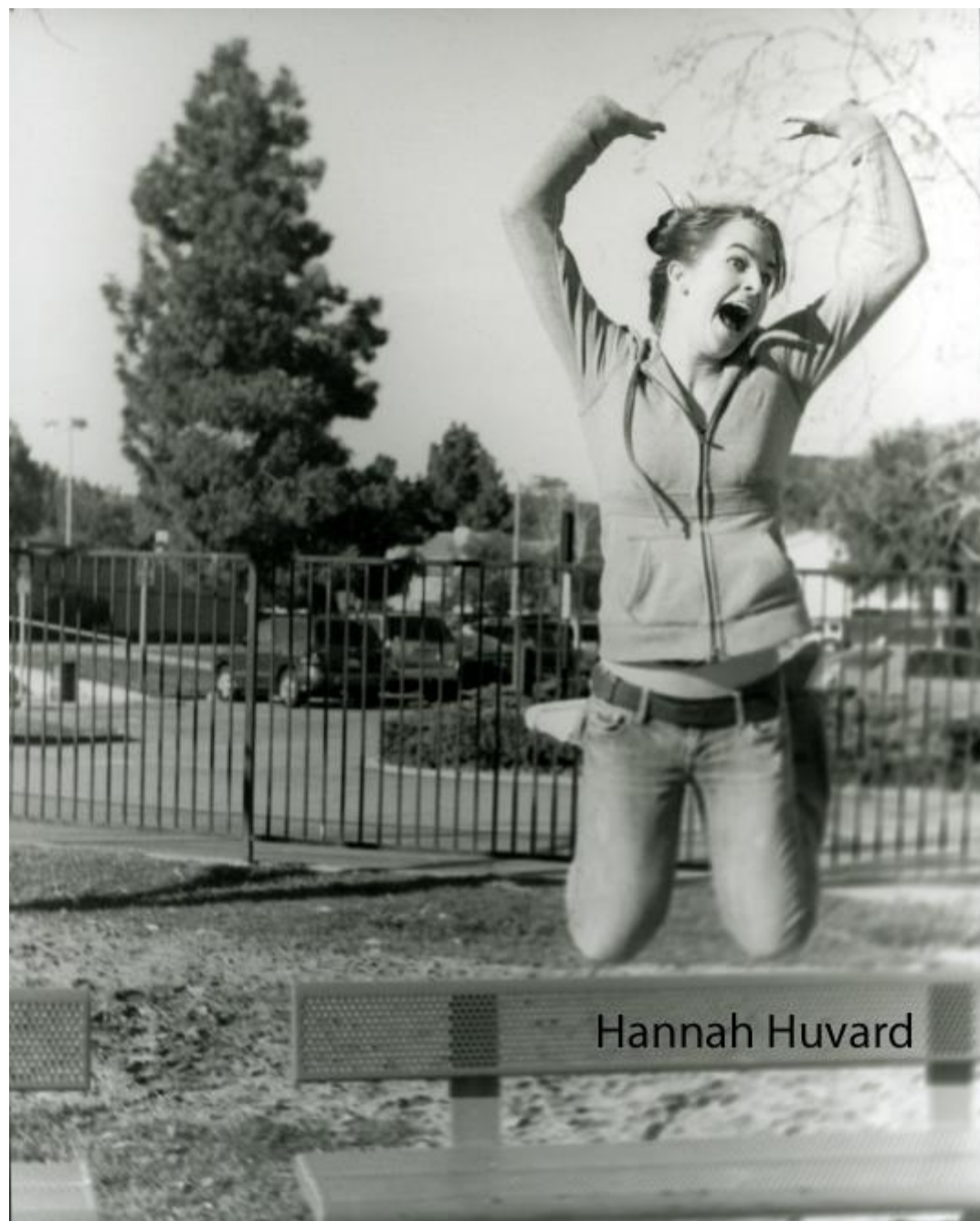


Matt Pineiro





Caitlin Kouba





Carly Magnuson



Dylan Reynolds

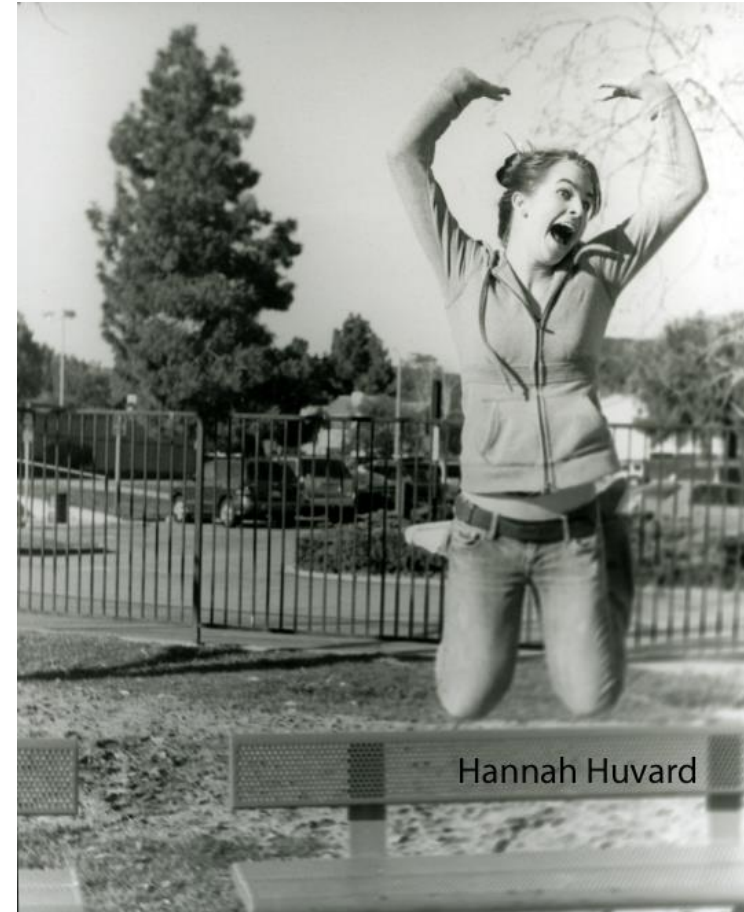
Cars appear static
whether moving or
not in freeze
motion photographs

NO CAR PHOTOS
IN FREEZE MOTION



How to shoot Freeze Motion

- Shutter Speed at 1/500 or faster
- Hold camera steady when shooting
- Vertical motion is easiest to capture
- No cars for freeze motion
- Pay attention to negative space – avoid mergers



Keep your tongue tucked in when modeling for motion photography



Be aware of where you are stepping



Pothole in the grass

Set camera down in safe place if you are the model in motion

