

Portrait

Compositional Production

Shoot 30 well composed Portraits

Objectives of Portrait Shoot



- Eyes are in **focus**
- Shoot in GOOD LIGHT – ***Open Shade*** or ***Overcast Day***
- Vary your shots between ***Portrait*** and ***Landscape*** Orientation
- Shallow ***Depth of Field***
- ***Avoid Mergers***

Eyes in Focus



- Good – Got Close
- Bad – Out of Focus
- Make sure the subject's eyes are in focus





“GOOD” Light



- When sunny outside, shoot in ***Open Shade***
- **Overcast** days are the best light conditions for most photography
- Shoot **10 minutes before sunrise** or **10 minutes after sunrise**

What is Open Shade?



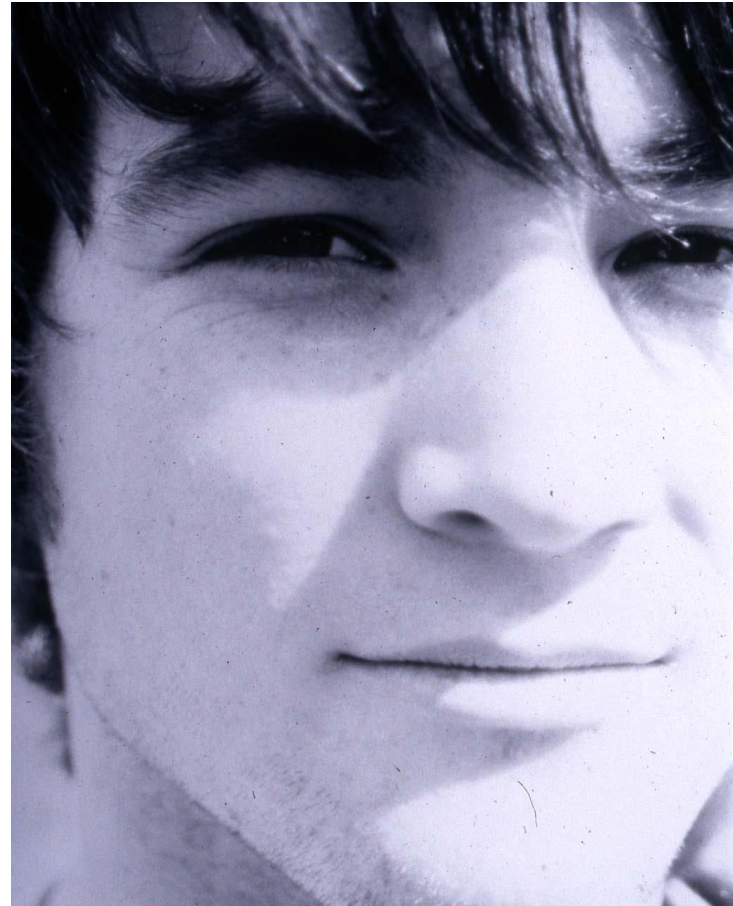
Master Painting by Eric Lindroth

What does open shade or a cloudy day do?

- It diffuses light
- There are no harsh shadows cast on the face



“Good” Light vs. “Bad” Light



















Erica Smith

Portrait and Landscape Orientation

Portrait Orientation



Landscape Orientation



If you shoot Landscape Make Sure your Negative Space is Useful



Negative space not useful here















Ali Camarena

Can I shoot more than one person in photo?

Yes



Avoid Mergers

- This photo has avoided mergers well
- Watch your background to make sure there are no trees growing out the head





Shallow Depth of Field

- Shoot with a large aperture
- Background softens
- Face becomes the ***Focal Point*** (***especially the eyes***)





Simple backgrounds-
Avoid mergers

Eyes on focus

Diffused light (clouds
or open shade)

Shallow Depth of Field

Most shots should be
in portrait orientation
(vertical)

