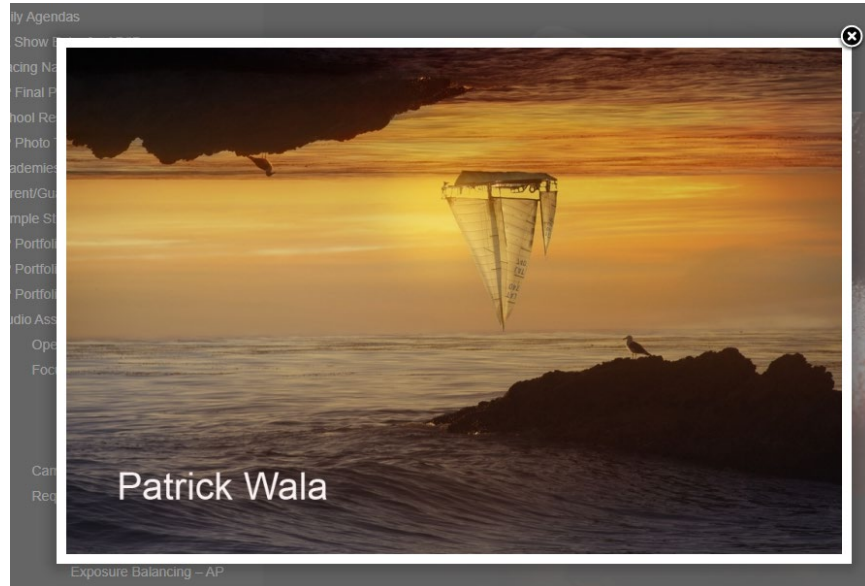


## NPHS Art Show – Written Reflective Response

Please paste your screen shots of your images into this document. Select your 3 favorite images. For each image, answer the questions that follow.

Image 1



Artist name: Patrick Wala

Why is this image one of your favorites from the art show?

*I am a big fan of photomontages as they often convey multiple meanings and they surprise me. The amount Patrick made the sky blend in with the water at the top of the image is just right. It shows how a cloud filled sky has many similarities to water. So often we see the sky reflected in the water, but Patrick has added an inversion here where the water's image is reflected onto the sky. There is a great deal of slow but steady, rhythmic movement in this image which I find hypnotizing. There is movement in the wave, the boat, and the sun setting.*

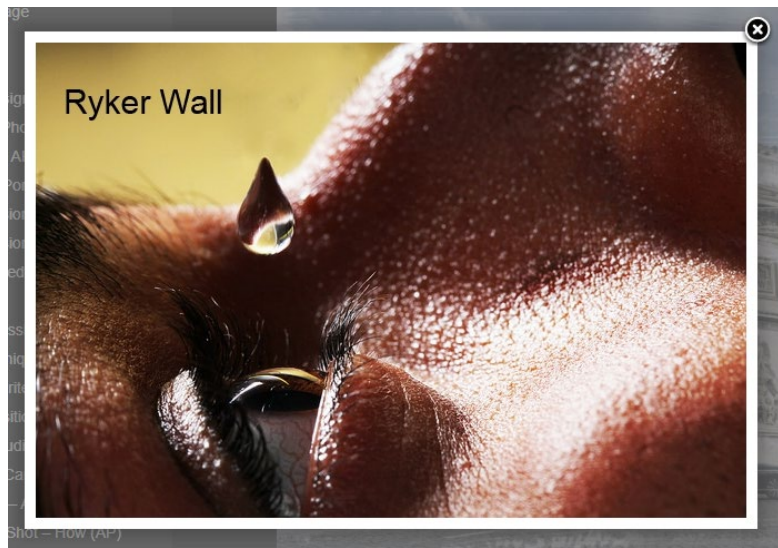
What does this artist do well in the application of strong composition?

*The artist uses the rocks to very creatively frame the subjects. The sailboat is brightest and my eyes are constantly drawn back to it because of its relative brightness. The birds face inward and adding to the inward movement of the image.*

What kind of light is used in this image (harsh, diffused, backlighting, angled lighting, long exposure, etc.) and how does this light use help the image overall compositionally and/or thematically?

*There is both silhouette and backlighting in this image. The backlighting brings out the detail of the sail and the silhouettes make the bird and rocks stand out against the brighter background. It is amazing how he is able to get the most out of the backlighting by using an opaque and transparent surface to shine the light behind.*

Image 2



Artist name: Ryker Wall

Why is this image one of your favorites from the art show?

*I witnessed this series of images being made in the photo studio in the classroom. This is not Photoshopped. I have to give credit to Eric Gerald, the person in this photo, who willingly took many drops of water into his eyes so that Ryker could capture this image perfectly. Eric's eyes were pretty red after a long time doing this. I love how the drop was captured perfectly against the background so that it lines up right at the border of his face and the backdrop.*

What does this artist do well in the application of strong composition?

*The major composition element being used here is shape. The shape of the eye from this angle is very similar to the shape of the drop. We associate tear drops with eyes and the mirrored tear drop shapes here really emphasize this relationship. Also, the drop looks like an inversion of the eye in the use of tonalities. The lighter part of the eye and drop are at the bottom of the shape but backwards from one another where they appear within the shape.*

What kind of light is used in this image (harsh, diffused, backlighting, angled lighting, long exposure, etc.) and how does this light use help the image overall compositionally and/or thematically?

*The lighting used here is diffused. This was also shot using a strobe (commonly called a flash). The time of the shutter release and strobe firing had to be perfect to capture the drop in the right place at the right time with no visible blur. So not only was the light source critical in this image, timing of light was just as important.*

Image 3



Artist name: Kimberlee Zampardi

Why is this image one of your favorites from the art show?

*This image conveys anguish and struggle. Kimberlee shows the pain so many feel with body image perception. The way the person stares down at the scale and then cutting up the photo into jagged puzzle pieces demonstrates confusion and brokenness. The way the person is gripping the torso, it make me feel that all the jaggedness displayed is what is felt on the inside of the individual. I also like how the person's face is not recognizable so that this image could represent any human going through this torment and the fact that the face is cracked adds even more power to the image, as shame is often felt in the face.*

What does this artist do well in the application of strong composition?

*The use of line, shape and strong contrast really bring home the message of this photo. Kimberlee could have cut this image up in any way she chose using more curvy and smooth lines, but the jagged sharp lines and shapes connote the harshness of the subject matter. The dark clothing the model is wearing creates outstanding contrast to the dramatic whites all adding the drama of the image.*

What kind of light is used in this image (harsh, diffused, backlighting, angled lighting, long exposure, etc.) and how does this light use help the image overall compositionally and/or thematically?

*The light is definitely in a chiaroscuro style. Very dramatic lights and darks drive home the harsh cultural perceptions about beauty. The lighting also ties well into the use of the scale. People who deal with body image perception feel that they are always trying to balance their weight and image and so using harsh lights and darks dramatizes this shifting from extremes in weight and/or perceptions.*