

Brady Craven

AP Studio Art Final Portfolio

Sustained Investigation

Written Evidence

With my Sustained Investigation, I chose to explore the depths of the human conscious. The mentality that arose which inspired this project was a great sense of loneliness, lack of self-identity, and questioning the limits of reality.

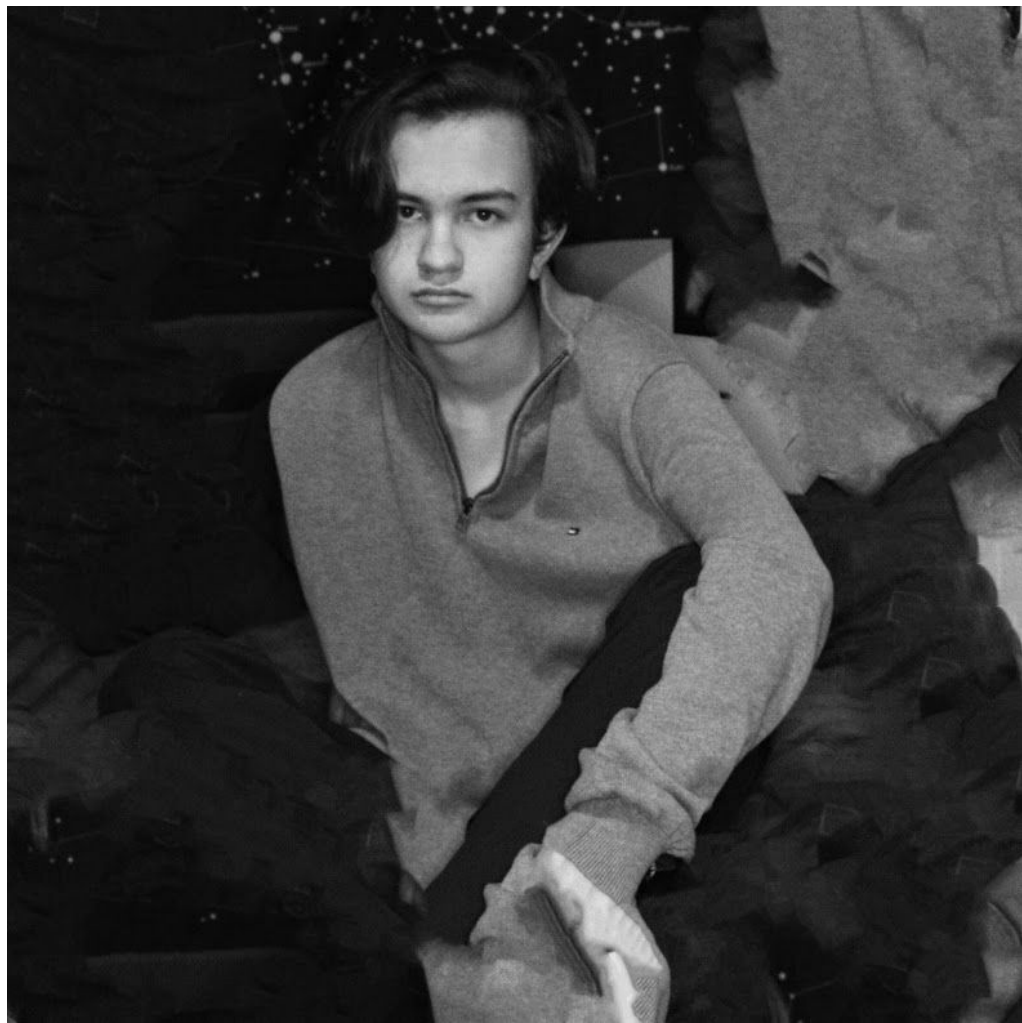
Beginning with image 1, a human figure being formed by television static is displayed. Its purpose is to expose the effects of the internet and technology which are truly catastrophic for the human mindset, causing some to feel as if they are not themselves anymore. Through images 2-4, I navigate the topic of loneliness, and feeling as if the world around you is completely empty. In image 5, the decaying edges of the photo represent the world around one crumbling as they feel like the entire world is against them and that they are no longer acting like themselves. Images 7-12 detail identity confusion and truly entering a state in which you feel as if you are so lost in the world that there is no true form of yourself, evident in the split nature of the subjects in these images. Images 14 and 15 show the a figure becoming completely featureless and reconnecting with the Earth and their surroundings, a ghost haunting the places they once inhabited.

















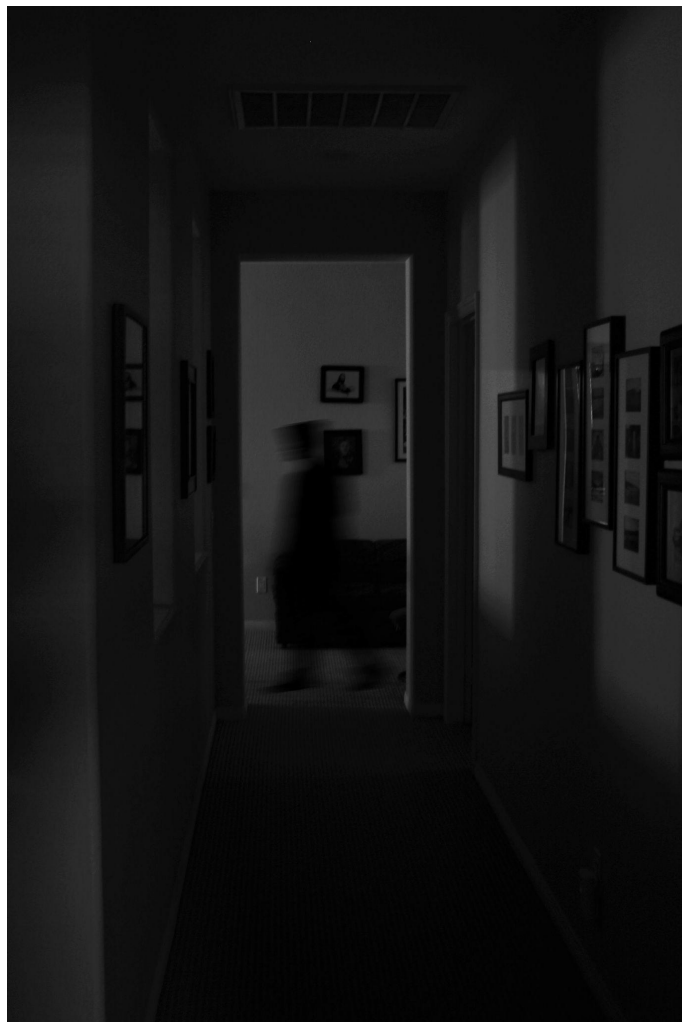














Selected Works

