

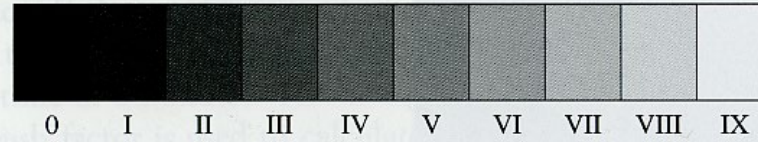
Light Meter

And shooting on Manual Mode

Light Meter

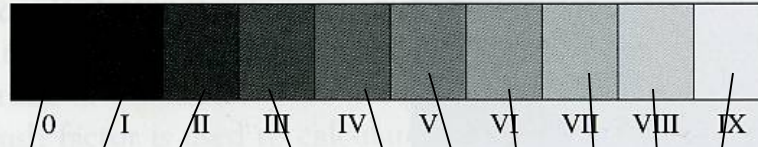
- Purpose = tells you **how much light** is being allowed into the camera based on the current **APERTURE**, **SHUTTER SPEED**, and **ISO settings**
- Averages all light in scene to **18% gray** which is ZONE V on Zone system scale
- Is correct most of the time

Zone Ruler



ZONE	DESCRIPTION
0	Maximum black
I	The first tone distinguishable from black with no detail
II	The first visible texture in a very dark area
III	Black with detail—a highly textured dark area with distinct detail; this zone is considered the shadow detail area for average value metering
IV	Dark gray
V	Middle gray, with 18 percent reflectance
VI	Light gray
VII	White with detail; the lightest area in the photograph that will have distinct texture or detail; this is the highlight area for the average value method
VIII	The brightest tone distinguishable from white
IX	Paper white

Zone Ruler

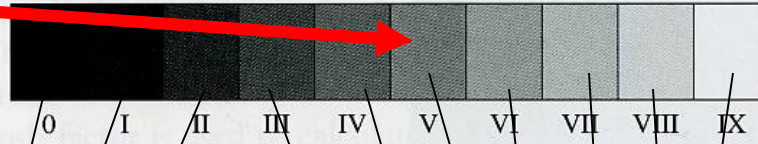


18% gray

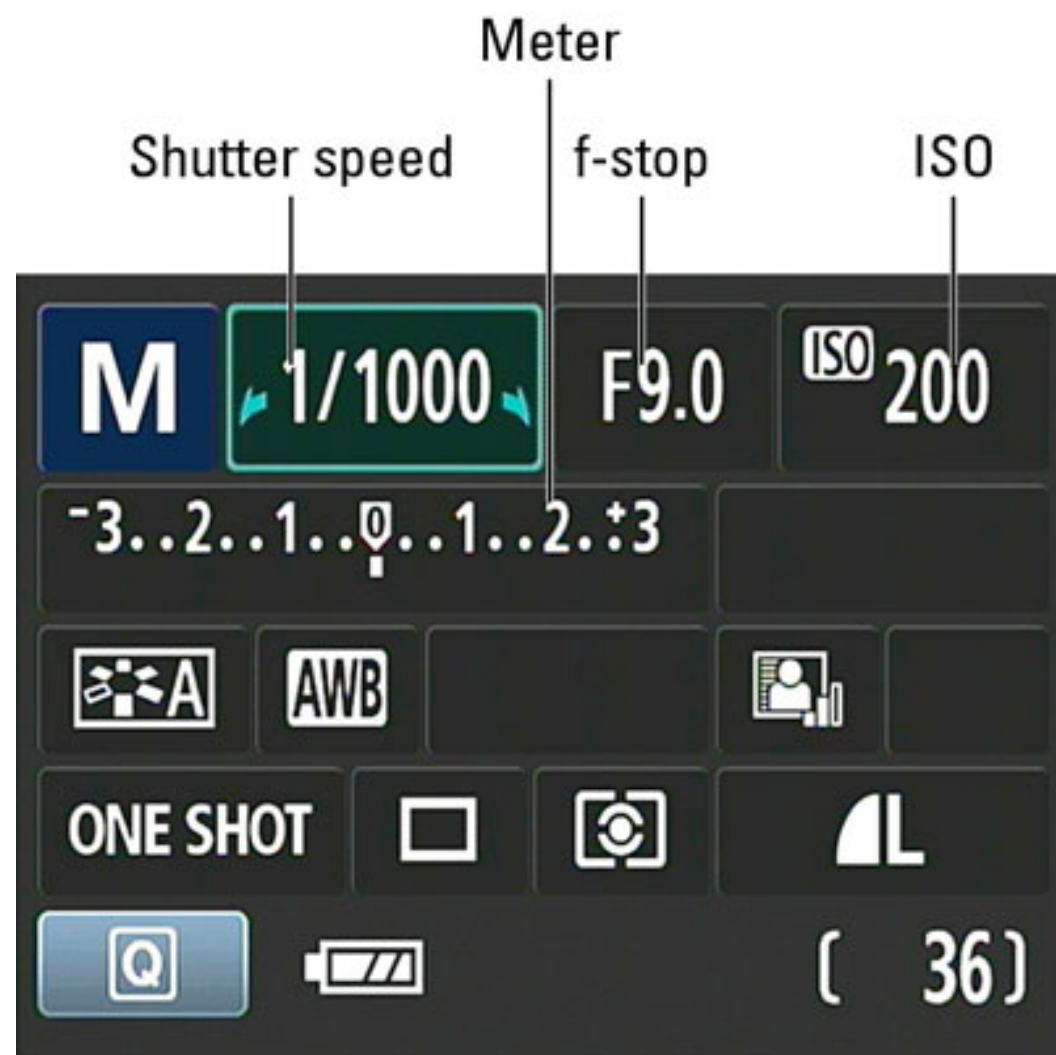
- Tone to which all light meters average the light given off by the scene which is being photographed

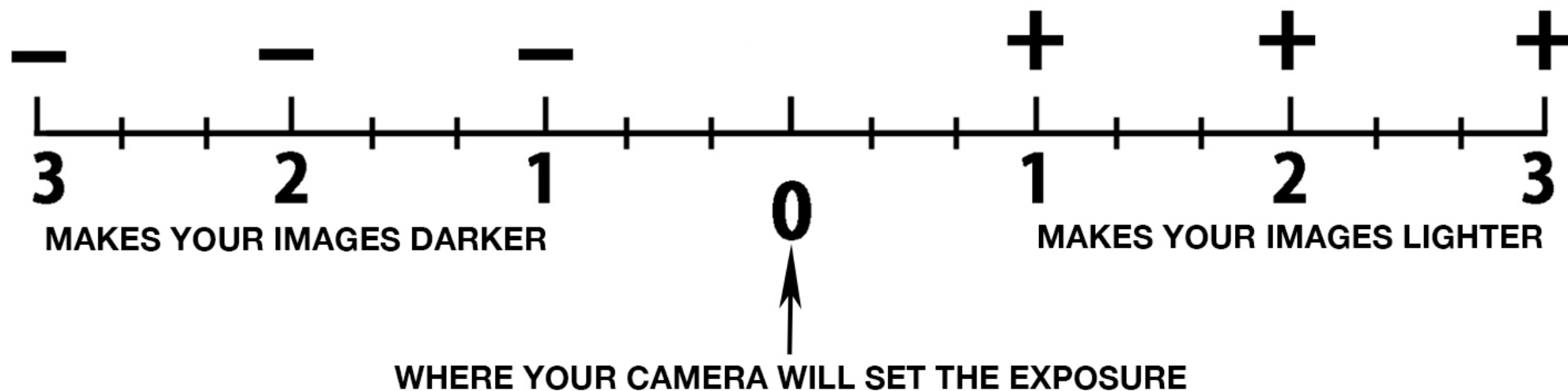
18% gray

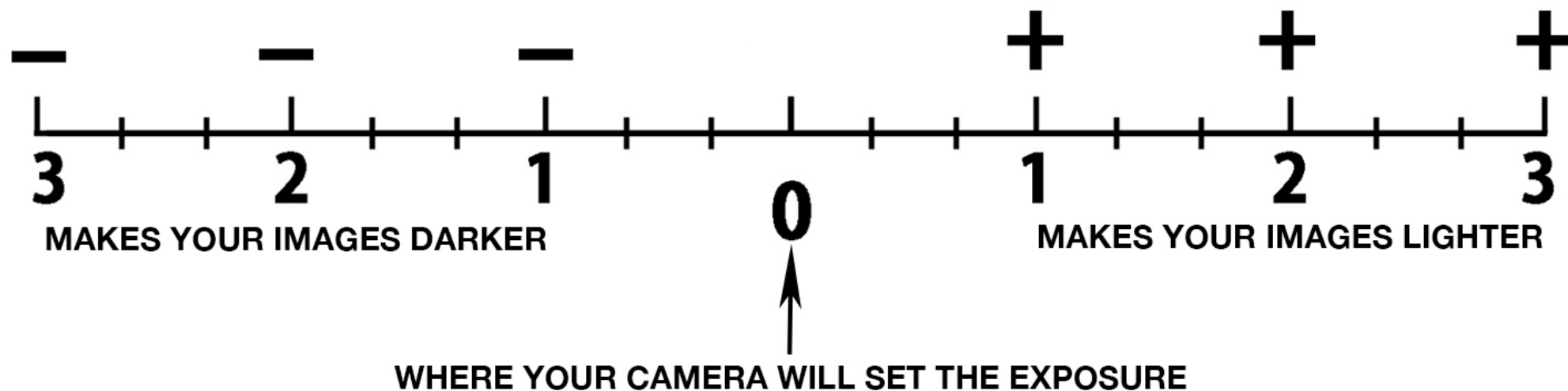
Zone Ruler



This is 18% gray.





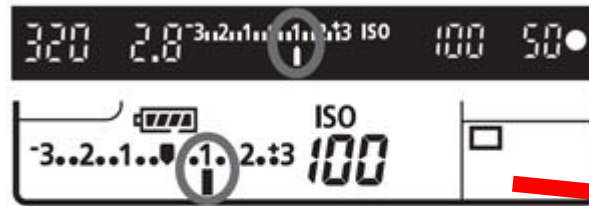


Underexposure

Overexposure



Increased exposure for a brighter image



Decreased exposure for a darker image



