

Ailish Hawkins

AP Studio Art Final Portfolio

Sustained Investigation

Written Evidence

For my sustained investigation I looked to display the emotions that come with each stage of a race. I looked to capture running in the way that runners see it, but that many others miss. One question that guided by sustained investigation is “Why do you choose to run?”, a question I have been asked many times. I looked to display the feelings in your legs, the anxiety in your head, the pit in your stomach. These are the emotions that make running so special. It is a sport that pushes you to your limits. The beauty of running is in the commitment the athletes put into the sport.

I began conveying the act of running while shooting in broad daylight and then from photo 5 on, I started to display the emotions behind it and switched to darker light, which captured the drama of running more. The photos are a mixture of freeze motion(photo 5,7,8) and pan motion (photo 9) and some still shots (photo 6,15). The race begins with the diptych, image 5. Photo 3 and 14 show the dizziness in your head after a fast race. For photo 14 I used a spray bottle to develop splotches on the photo. In photo 1,13 I looked to capture the “all eyes on you” feeling, and the resulting pressure.









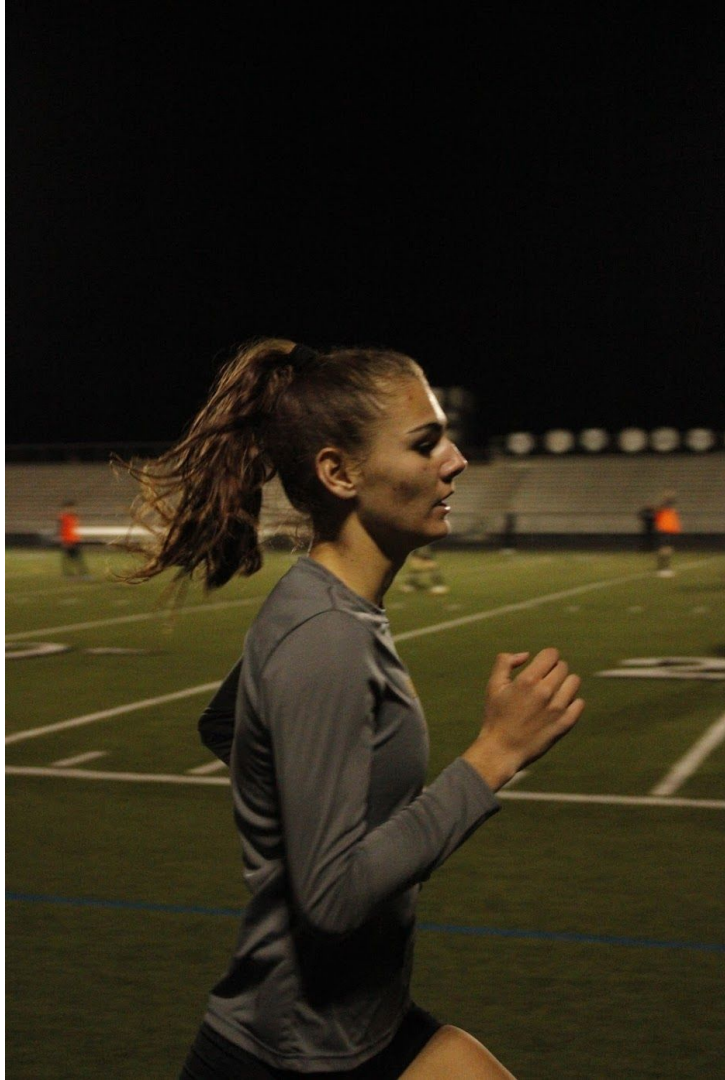




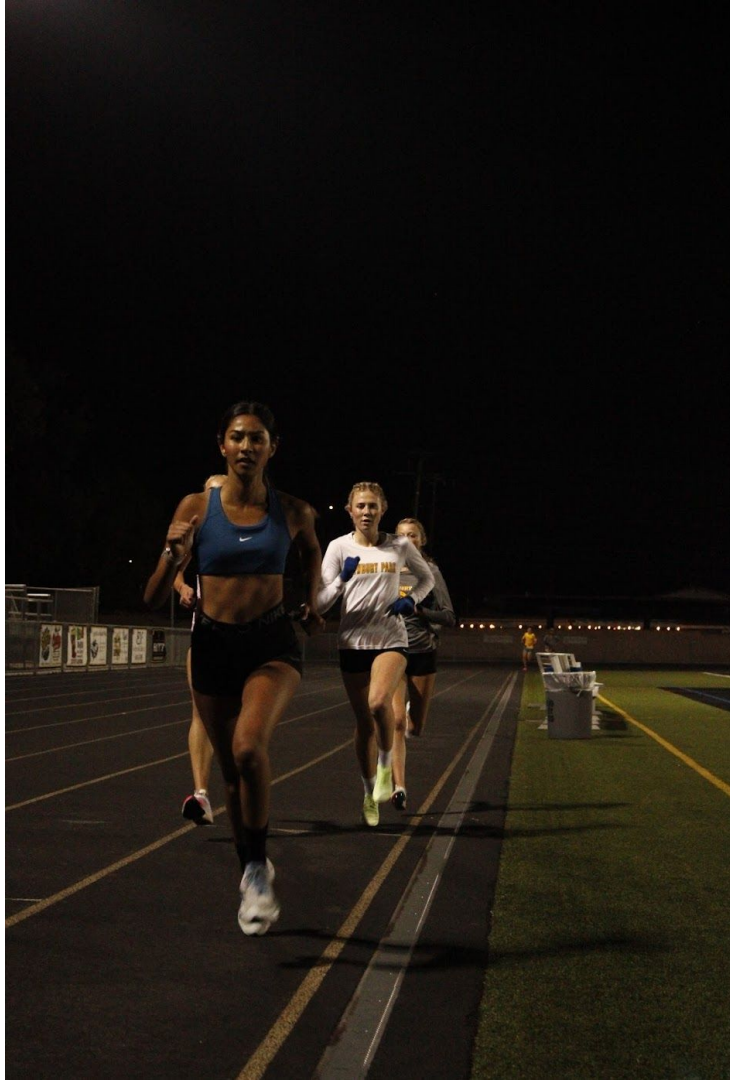






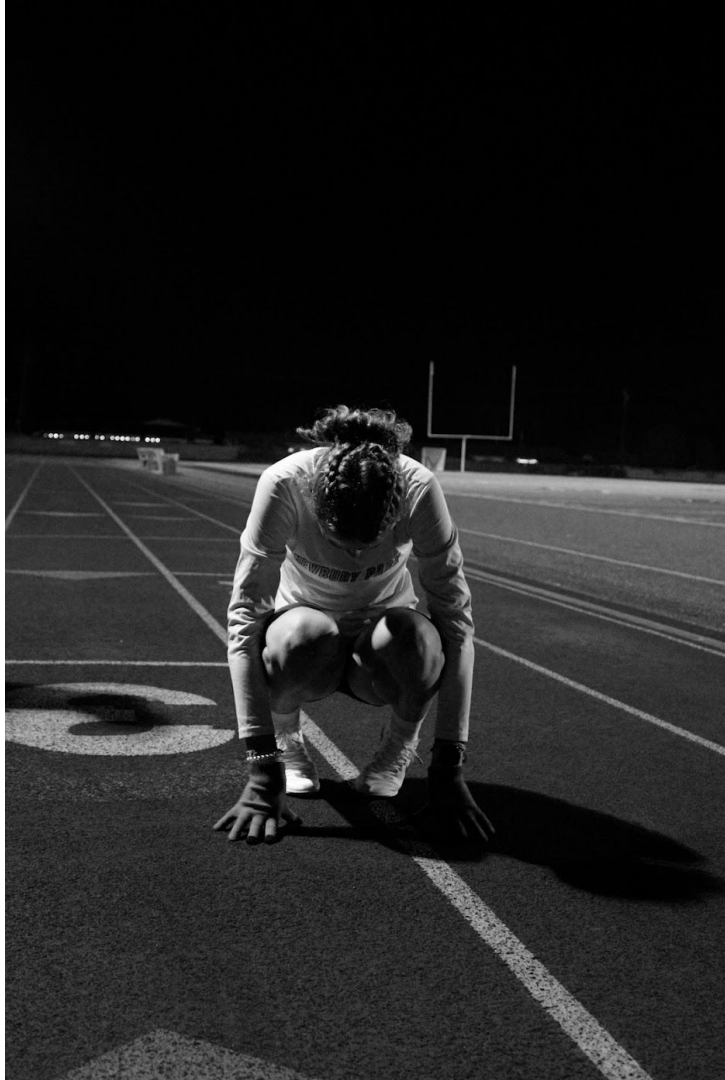












Selected Works









