

Lianne King


AP Studio Art Final Portfolio

Sustained Investigation

Written Evidence

In the age of information and technology, entertainment is increasingly digital. Online games and online friends have become the norm, and although that isn't a bad thing, it has resulted in a noticeable disconnect between humanity and the natural world. For my sustained investigation, I wanted to tell the story of a person who is initially detached from nature, but grows to reconnect with it. Through the photographs I've taken, I hoped to explore the feeling of reconnecting with the world around us and recognizing its beauty. My sustained investigation opens with photographs in a monochrome scheme and pictures of people indoors pondering nature. From there, it expands out into the world. At the very end of the album, humanity has returned to the earth, and even in the afterlife retains an appreciation for nature.

ULTRAFINE EXTREME 400ISO

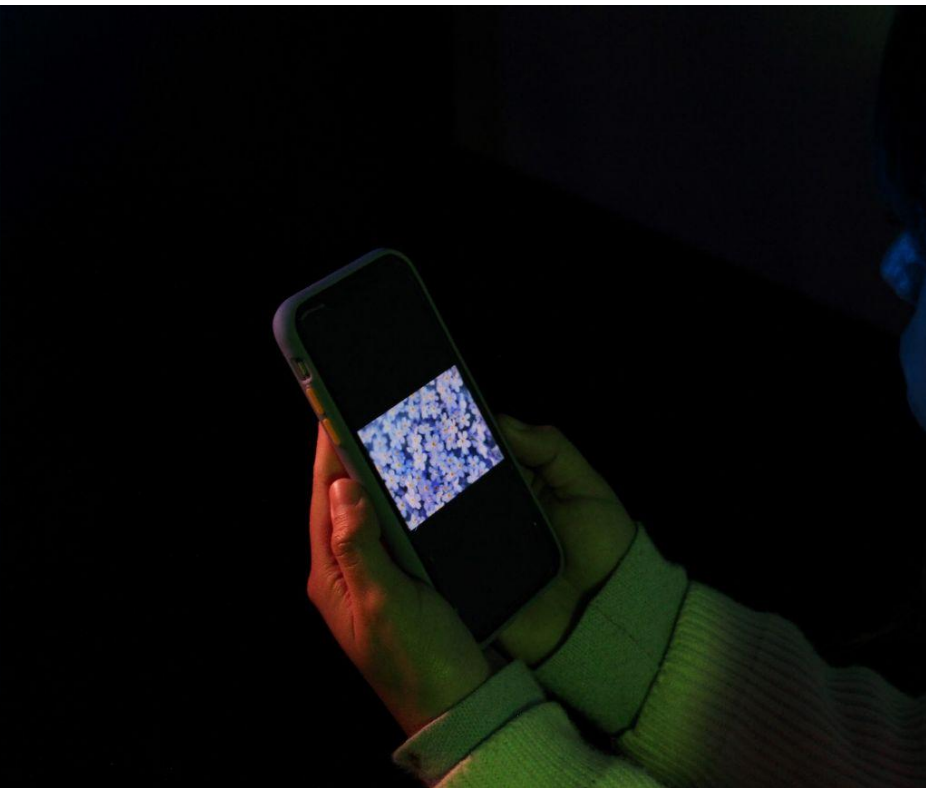
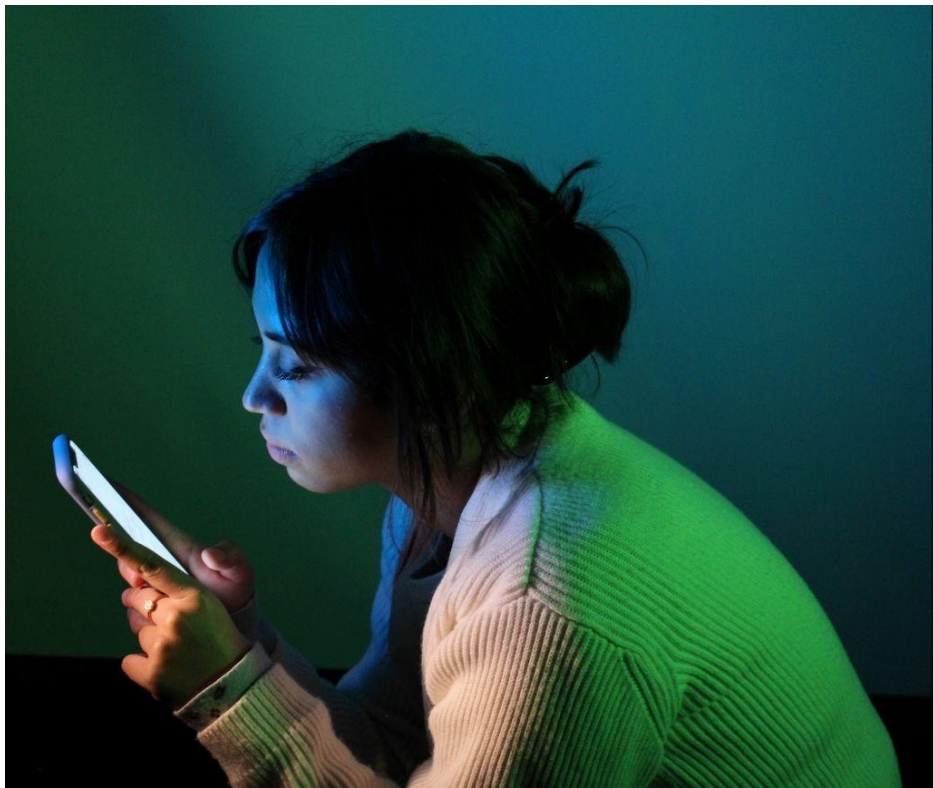
A black and white photograph of a drinking fountain, mounted on a film strip. The fountain is a light-colored, rectangular unit with a spout on the left. A flower is placed in the spout. A sign on the front of the fountain reads:

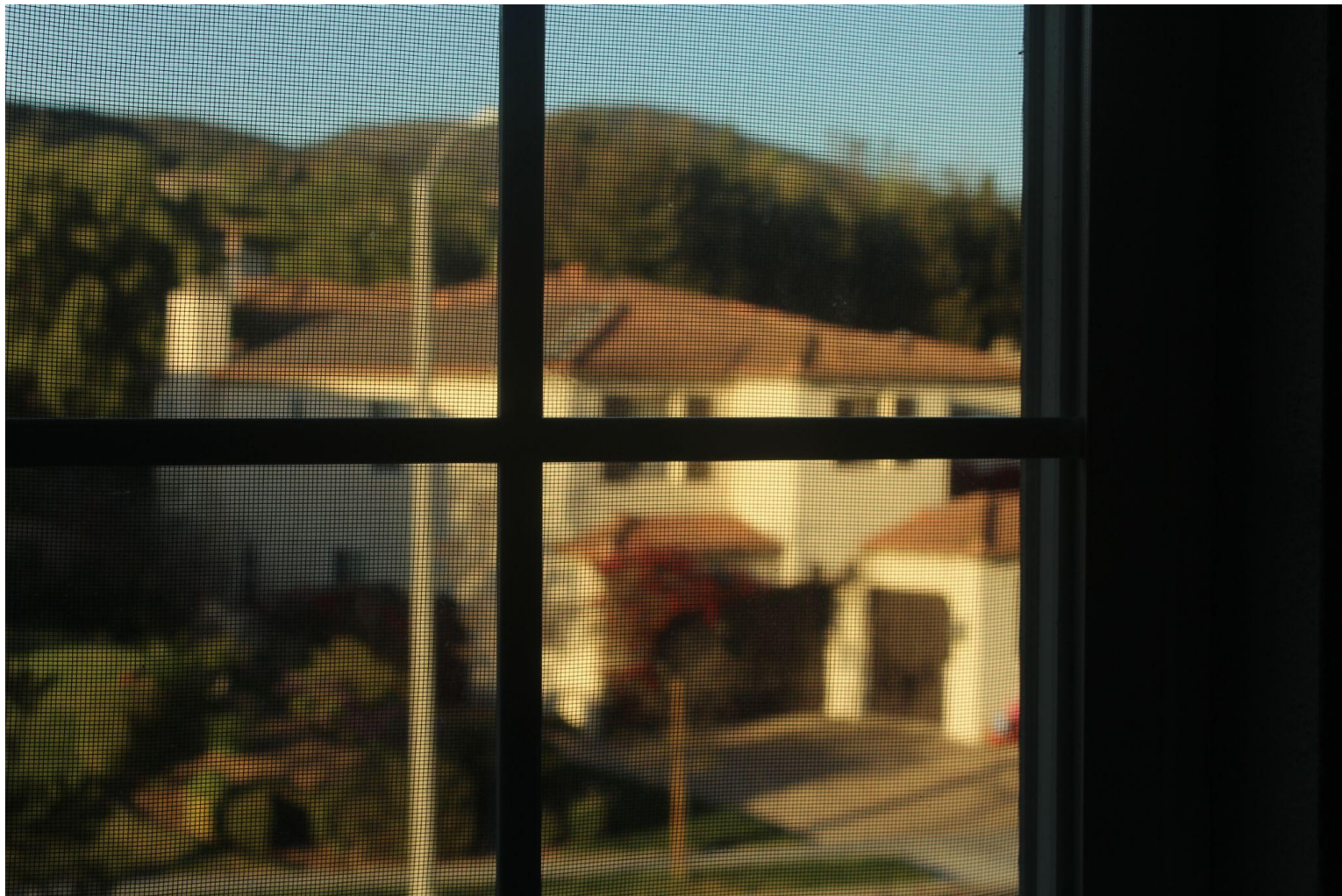
**DRINKING FOUNTAIN
RESTRICTED
TO FILLING
PERSONAL DRINKING
CONTAINERS
ONLY**

 The film strip has sprocket holes visible on the left and right sides. The text "ULTRAFINE EXTREME 400ISO" is visible at the top of the film strip, and the number "3" is visible at the bottom.



























IN MEMORY OF
BETSY GROSS
1986-2004



Selected Works











IN MEMORY OF
BETSY GROSS
1986-2004